

Species Richness, Stem Density, and Canopy in Food Forests: Contributions to Ecosystem Services in an Urban Environment

Rockwell, Cara A.; Crow, Alex; Guimarães, Érika R.; Recinos, Eduardo; La Belle, Deborah

Veröffentlichungsversion / Published Version

Zeitschriftenartikel / journal article

Empfohlene Zitierung / Suggested Citation:

Rockwell, C. A., Crow, A., Guimarães, É. R., Recinos, E., & La Belle, D. (2022). Species Richness, Stem Density, and Canopy in Food Forests: Contributions to Ecosystem Services in an Urban Environment. *Urban Planning*, 7(2), 139-154. <https://doi.org/10.17645/up.v7i2.5135>

Nutzungsbedingungen:

Dieser Text wird unter einer CC BY Lizenz (Namensnennung) zur Verfügung gestellt. Nähere Auskünfte zu den CC-Lizenzen finden Sie hier: <https://creativecommons.org/licenses/by/4.0/deed.de>

Terms of use:

This document is made available under a CC BY Licence (Attribution). For more information see: <https://creativecommons.org/licenses/by/4.0>

Article

Species Richness, Stem Density, and Canopy in Food Forests: Contributions to Ecosystem Services in an Urban Environment

Cara A. Rockwell ^{1,*}, Alex Crow ², Érika R. Guimarães ², Eduardo Recinos ³, and Deborah La Belle ³¹ Institute of Environment, Florida International University, USA² Department of Earth and Environment, Florida International University, USA³ The Education Fund, USA

* Corresponding author (crockwel@fiu.edu)

Submitted: 24 November 2021 | Accepted: 10 March 2022 | Published: 31 May 2022

Abstract

Food forests expand the traditional concepts of urban forestry and agriculture, providing a broad diversity of tree-related ecosystem services and goods. Even though food forest systems bridge an obvious gap between agriculture and forestry, their potential value in the urban landscape is often undervalued. The inclusion of edible species in urban forest stands can enhance nutrition and well-being in the urban landscape, where food deserts are common. The potential for ecosystem services is especially pronounced in subtropical and tropical regions, where there is a heightened need for shade due to climate change-related heat waves. For this study, we investigated the tree species richness, stem density, and canopy cover provided by food forest gardens in 10 Miami-Dade County, Florida public schools located in the urban landscape. We compared results with neighboring properties around the schools and discovered that the food forest canopy was comparable with neighborhood urban tree cover. Additionally, we established that arborescent species richness (including an increase in edible taxa) and stem density was higher in food forests than in adjacent neighborhood plots. We posit that local food production could be enhanced by planting edible species in small spaces (e.g., empty lots or residential yards), as opposed to focusing on just ornamental taxa or recommended street trees. Our study highlights the importance of using mixed edible tree species plantings (especially with consideration to provisioning, regulating, and supporting services), potentially meeting urban forestry and agricultural goals proposed by urban planners and managers.

Keywords

agroforestry; environmental services; green infrastructure; urban ecology; urban forestry; urban planning; urban sustainability

Issue

This article is part of the issue “From Smart Urban Forests to Edible Cities: New Approaches in Urban Planning and Design” edited by Alessio Russo (University of Gloucestershire) and Francisco J. Escobedo (USDA Forest Service).

© 2022 by the author(s); licensee Cogitatio (Lisbon, Portugal). This article is licensed under a Creative Commons Attribution 4.0 International License (CC BY).

1. Introduction

Urbanization has accelerated over the last few decades, with an estimated 55% of the global population now living in cities (Gao & O’Neill, 2020). Multiple socio-economic benefits are associated with the urbanization process, yet questions remain about the feasibility of creating sustainable urban spaces where population density is high. As an example, urban forestry has gained considerable traction as an essential component of urban

planning in the last decade (Escobedo et al., 2019; Miller et al., 2015). Increased forest canopy (or other types of green infrastructure; see Meléndez-Ackerman et al., 2018) in an otherwise artificial environment ensures the maintenance of several important ecosystem services, including mitigation of urban heat islands (Bowler et al., 2010; Moll, 1989) and carbon storage (Escobedo et al., 2010; Nowak & Crane, 2002). Indeed, in the last decade, there has been an intensified global effort to increase forest cover in the urban landscape, and

with good reason. For instance, a recent study looking at 37 metropolitan areas in the US determined that tree canopy coverage in minority neighborhoods averaged only 23%, compared to 43% in predominately US-born white neighborhoods (Locke et al., 2021). Other researchers corroborate this inequity of tree cover distribution across lower income neighborhoods (e.g., Flocks et al., 2011; Landry & Chakraborty, 2009), including the strong correlation between urban biodiversity and neighborhood wealth (the so-called “luxury effect”; see Hope et al., 2003; Leong et al., 2018; Schell et al., 2020). This type of socioecological disparity has led to the development of environmental justice movements (see Campbell, 2014), conceptual models (e.g., Johnson et al., 2020), as well as citizen science tools (e.g., Tree Equity Score; Vibrant Cities Lab: Resources for Urban Forestry, Trees, and Green Infrastructure).

Such discussions have important implications for sustainability and resilience in the urban landscape, not a minor consideration in this era of global climate change (see Ahern, 2013). Community resilience has been defined by other authors as the ability of community members to manage and use communal resources (including food) in order to thrive in an unpredictable and dynamic environment (see Food and Agriculture Organization of the United Nations, 2013; Magis, 2010; Tendall et al., 2015). Resilience is typically viewed as a key factor in determining sustainability (or the ability to meet our needs without compromising the needs of future generations; Berkes et al., 2008; Brundtland & Khalid, 1987; Wu, 2010). Accordingly, one way to reduce a community’s ecological and economic vulnerability is to encourage a diversification of natural resources, including economically and culturally important plants (Brown & Jameton, 2000; Buchmann, 2009; Clark & Nicholas, 2013). Other studies have highlighted the important role that locally produced food plays in social networking, health, and community autonomy, particularly during times of economic and environmental strife (e.g., Buchmann, 2009; Meléndez-Ackerman et al., 2018; Shimpou et al., 2019). An increasingly popular trend in urban landscapes includes the cultivation of edible species in multi-storied home gardens, or “food forests” (FFs; Jacke & Toensmeier, 2005). FFs (in the permaculture lexicon, an edible agroforest with an emphasis on perennial plant taxa; see Park & Higgs, 2018; Park et al., 2018) expand the traditional concepts of urban forestry. Despite its ties to the relatively recent permaculture community, these types of multi-storied home gardens are some of the oldest agroforestry systems in existence, particularly in the pantropical regions of the world (Michon et al., 1986; Miller & Nair, 2006; Soemarwoto, 1987). The inclusion of high value edible tree species in gardens has the potential to enhance nutrition and well-being in urban areas, where “food deserts” are common (see Jensen & Orfila, 2021), perhaps explaining their increasing popularity in temperate areas (Lovell et al., 2017).

The ecological design of a FF mimics the structure and biodiversity of a natural forest system (Clark & Nicholas, 2013), including the high species richness, nutrient cycling, and multiple canopy layers typically found under natural conditions (McCoy et al., 2021). Even though FF systems are thought to deliver a broader perspective on the concepts of urban forestry and agriculture (McLain et al., 2012; Park et al., 2018), and contribute to urban food security (Albrecht & Wiek, 2021), their long-term impact in the urban landscape is still uncertain. While the expansive body of scientific studies on tropical rural agroforestry systems dates back several decades, empirical evidence on ecosystem services provided by FFs in the Northern Hemisphere is still in the early stages of development. Ecosystem services are typically defined as falling under distinct categories, including provisioning, regulating, supporting, and cultural services (see Escobedo et al., 2011; Zhang et al., 2018). In the case of FFs, these systems have the potential to provide a broad diversity of tree-related services under all four classifications: provisioning (food security, medicinal resources), regulating (carbon storage, nutrient cycling, shade, erosion mitigation, etc.), supporting (habitat, biodiversity), and cultural (environmental education, sense of place, aesthetic appeal; Eiden, 2021; Thiesen et al., 2022).

Certainly, an added benefit of the FF design (especially in tropical climates) is the patchy shade conditions provided by the multiple canopy layers. The upper and mid-canopy layers, as well as the high stem density, inevitably provide protection for plant species in the lower strata that might be more vulnerable to drought and heat. Additionally, well-designed mixed-species gardens that are considered “closed systems” (i.e., few to no external inputs; see Hart, 1996) are likely to improve soil health, with added benefits to the overall ecological sustainability of home gardening. Nitrogen loss in particular is reduced, due to the enhanced nutrient uptake by tree and crop roots from varying soil depths, a feature much more prominent in mixed-species communities (Nair & Graetz, 2004). The relatively small size of FFs also lends well to encouraging the presence of beneficial insects, including those responsible for pollination and predation services, something that has been noted in diverse, smaller gardens (but not yet studied in FF gardens; see Philpott & Bichier, 2017).

To date, few studies in this region have linked high plant diversity with food security, but it is a logical conclusion that agroforestry systems will augment nutrition levels in a given community, something that has already been documented in rural communities in the tropics (see Jose, 2009; Mburu et al., 2016; Mellisse et al., 2018). Even though edible tree species are often absent from municipal urban tree plans (see Brito & Borelli, 2020), their inclusion in these plans could help offset the low tree diversity often seen in urban areas, where city planners may select the most popular urban forest (UF) tree species, hoping to avoid certain risk factors, such

as breakage, maintenance costs, public ire, etc. (Barron et al., 2016; Castro et al., 2018; Kowalski & Conway, 2019; Paquette et al., 2006). Inevitably, this lack of diversity can put UFs at risk and reduces additional ecosystem services and benefits for community members.

We proposed to assess the tree species (or arborescent taxa; e.g., *Carica papaya*) richness, stem density, and canopy coverage of FF and neighboring UF plots in Miami-Dade County. Our aim with the study was to identify the potential contributions of these tree-based systems to provisioning (food production via the inclusion of edible taxa), regulating (canopy coverage), and supporting (species richness) services. Specifically, we ask:

1. Is species richness of arborescent taxa (≥ 5 cm diameter at breast height [dbh]) greater in the FF plots when compared with the species richness in UF plots, including a greater number of edible taxa?
2. Is stem density of arborescent species (≥ 5 cm dbh) higher in FF plots when compared with tree density in UF plots?
3. Is the percentage of canopy cover of FF plots comparable with those of UF plots?

2. Methods

2.1. Study Site

The study was conducted in Miami-Dade County, Florida (US), an area of approximately 6,300 km² that includes a diverse mix of metropolitan sprawl, natural areas, and agricultural lands (see Figure 1). The region is characterized by wet (May–October) and

dry (November–April) seasons, with warm subtropical summers and mild winters, similar to other areas of the Caribbean. Economic and ecological challenges (e.g., rapid development, sea-level rise, vulnerability to hurricanes, and a high diversity of invasive tropical plant and animal species) are prevalent in the region (see Dawson, 2017; Groves et al., 2019; Keenan et al., 2018; Staudhammer et al., 2015). For example, sea-level rise has begun to push wealthy homeowners from locations such as Miami Beach and Fisher Island to the less-affluent neighborhoods sitting on the mainland’s oolitic limestone Miami Rock Ridge. Long-term residents in these neighborhoods (many of them immigrants from the Caribbean and Latin America) are then dispersed, often to the outer reaches of the city, where housing prices are more affordable (Keenan et al., 2018).

Flocks et al. (2011) highlight the need for increased tree canopy cover in these disenfranchised neighborhoods, pointing to the higher tree diversity and density in wealthier neighborhoods, such as Coconut Grove and Coral Gables. Currently, the urban center of Miami-Dade County claims an overall canopy coverage of 20% (Hochmair et al., 2020), with recent canopy loss noted in some of the incorporated cities where our study sites are located (e.g., Hialeah). This amount is well below the 40–60% goal previously proposed by urban tree advocates like American Forests (Nowak & Greenfield, 2018), a trend that will be hard-pressed to curb, given the rapid population growth in the Miami-Dade County. According to a recent USDA Forest Service study (Nowak & Greenfield, 2018), Florida claims some of the highest rates of urban growth in the US, much of it centered in the southern portion of the state. Rapid urbanization in this subtropical urban landscape makes the

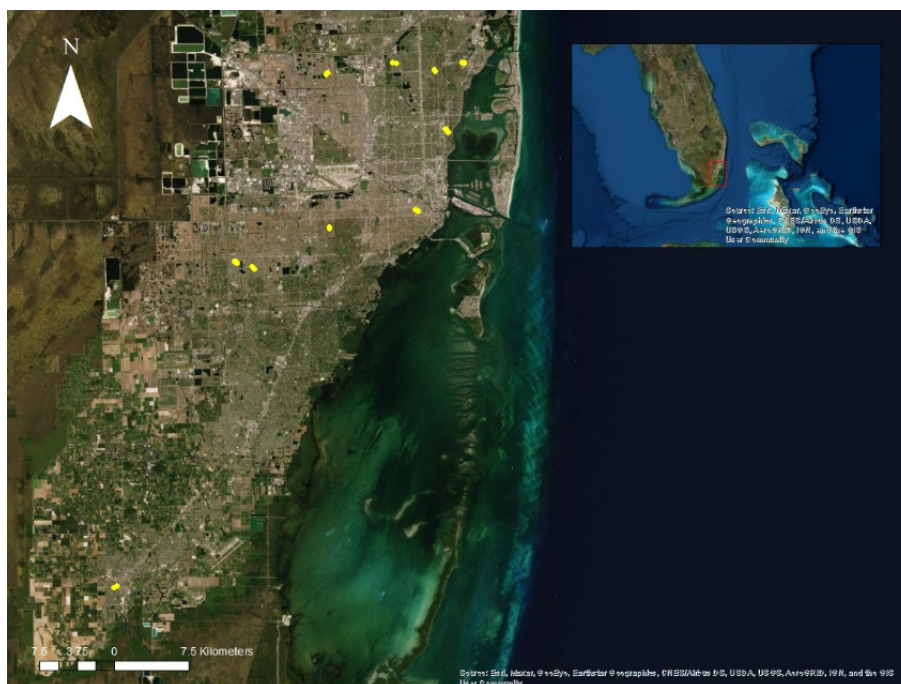


Figure 1. Miami-Dade County, Florida. Yellow dots indicate sites (10) where FF and UF plots were installed.

need to define and implement management plans for resilient UFs and urban growing systems even more critical (Barron et al., 2016; Ferreira et al., 2018; Ordóñez & Duinker, 2014).

2.2. Data Collection

Data were collected from February 2018 to October 2021 in FF gardens located in 10 Miami-Dade County public schools (see Figure 1). The size of the FF gardens in this study ranges from 0.10 to 0.40 ha, while the age of the gardens varies from one to six years. The FF gardens were designed and installed by The Education Fund's "Food Forests for Schools" program (<https://www.educationfund.org/what-we-do/programs/food-forests-for-schools/food-forests-for-schools.html>). Since 2015, the "Food Forests for Schools" program engages students at 26 Miami-Dade County public schools, elementary and K-8, to plant and maintain FFs on school grounds. The schools use the FFs to promote healthy eating habits and nutritional knowledge, and to create soothing outdoor sanctuaries while growing enough produce for school meals and homebound use. Typically, a rich variety of tropical edible species are cultivated in these perennial gardens (see Figure 2), including Filipino spinach (*Talinum fruticosum*), cranberry hibiscus (*Hibiscus acetosella*), papaya (*Carica papaya*), chaya (*Cnidoscolus aconitifolius*), katuk (*Sauropus androgynus*), sissoo spinach (*Alternanthera sissoo*), yuca (*Manihot esculenta*), bananas (*Musa* spp.), moringa (*Moringa oleifera*), longevity spinach (*Gynura procumbens*), and pigeon pea (*Cajanus cajan*; see McCoy et al., 2021).

Our field team established 10 20 × 20 m FF plots in the FF gardens, in which all arborescent (trees or tree-like) species with a dbh ≥ 5 cm were documented, mapped, and identified. Typically, the individuals in this size category were, on average, at least 4 m tall. Plot locations were selected based on a grid system, in which a plot location was chosen randomly using random num-

ber sequences (Laferrrière, 1987). A potential plot site was only rejected if it centered on an impervious substrate (i.e., without vegetation). Nonetheless, due to the locations of the gardens within or adjacent to school buildings, some of the 20 × 20 m FF plots included parts of the schools' buildings (see Figure 3), a typical occurrence in garden studies (e.g., Philpott & Bichier, 2017). Neighboring 20 × 20 m UF plots were randomly located at least 100 m away from the FF plots. Similar to the FF plots, potential UF plot locations were rejected if they centered on an impervious substrate (e.g., only street substrate represented the plot). Locations of the plots were required to either have public access or (if on private property) to be of a reasonable distance from the street to ensure confident identification of the species in question. In the UF plots, all arborescent species with a dbh ≥ 5 cm were also documented, mapped, and identified. Species richness was determined to be the total number of taxa with a dbh ≥ 5 cm per plot (e.g., Gotelli & Colwell, 2001). Stem density was calculated using the total number of arborescent stems ≥ 5 cm across the entire 400 m² plot and multiplied by the conversion factor (25) to generate stem density ha⁻¹.

Canopy size estimates of the FF and UF plots were determined using the USDA Forest Service's web-based urban tree canopy assessment tool *i-Tree Canopy* V.7 (<https://www.itreetools.org>). The photo interpretation method of *i-Tree Canopy* uses a random point sampling protocol that interfaces with Google Maps™, enabling the user to estimate the percentage of different land cover types, including tree canopy (Hwang & Wiseman, 2020; Nowak et al., 2018). US Forest Service protocol recommends sample sizes of 500 and 1,000 points, assuming a standard urban municipal area coupled with an average tree canopy cover (US Forest Service, 2011). Boundaries were projected for each 400 m² plot area onto a Google Maps™ image of the study area. For our relatively small study areas, we opted to use 30 survey points that were randomly generated for each plot



Figure 2. One of the Miami-Dade County Public Schools' FF gardens surveyed in this study.

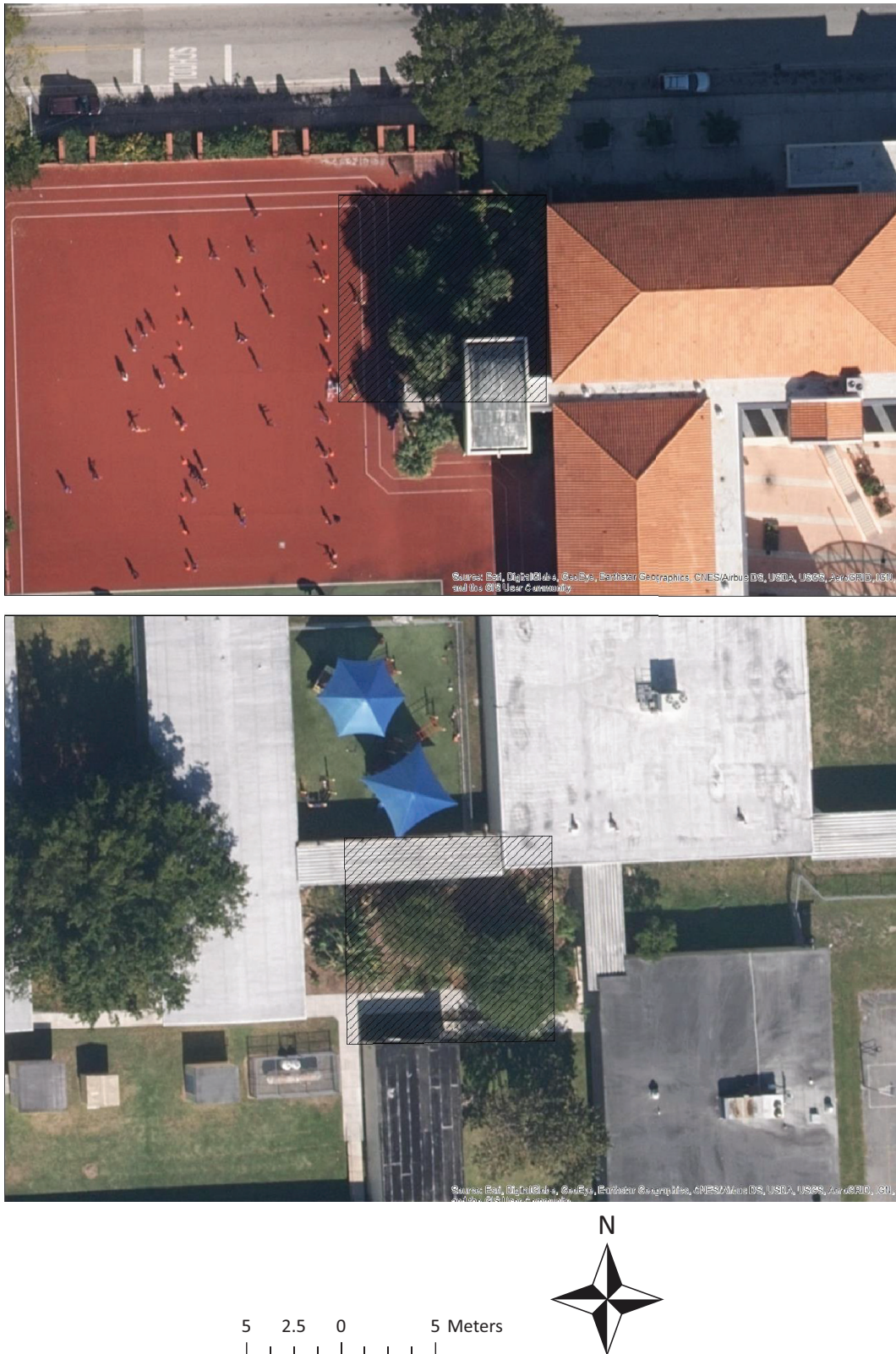


Figure 3. 20 × 20 m plots located in FF gardens at two of the participating Miami-Dade County Public Schools.

(Figure 4). Points were categorized as “tree” or “non-tree.” For the purpose of this study, tall herbaceous plants (e.g., papaya and banana) were also included under the “tree” category, given their height, which was

comparable to neighboring woody stems. Canopy from trees outside of the plots was not included since these stems were excluded from the species richness and stem density estimates.



Figure 4. An example of the 30 points that were randomly generated by *i-Tree Canopy* tool in the 20 × 20 m plots.

2.3. Data Analysis

We compared differences in species richness, stem density, and canopy coverage across all 20 FF and UF plots using paired student t-tests in the R 3.4.2 platform (<https://www.R-project.org>). In addition to verification of plant species using the online New York Botanical Garden *C. V. Starr Virtual Herbarium* (<http://sweetgum.nybg.org/science/vh>), we also verified the native and invasive status of plant taxa using the Florida Plant Atlas (<https://florida.plantatlas.usf.edu>), as well as the Florida Invasive Species Council (FISC) website (<https://floridainvasivespecies.org>). The FISC list characterizes invasive plants as Category I (capable of altering native plant communities) or Category II (increased in abundance but not altering native plant communities).

3. Results

We documented 36 arborescent species across the FF and UF plots (see Table 1), with only 17 species associated with the UF plots, and 28 species in the FF plots. Of those taxa, four FISC Category I species (*Albizia lebbbeck*, *Cupaniopsis anacardioides*, *Schefflera actinophylla*, and *Schinus terebinthifolia*) and three Category II species (*Cocos nucifera*, *Koelreuteria elegans*,

and *Terminalia catappa*) were identified. While most of the individual invasive stems ($n = 11$) were located in UF plots, four (*A. lebbbeck*, *C. nucifera*, *C. anacardioides*, and *T. catappa*) were found in FF plots. With the exception of the coconut palm, we assume that most of these invasive stems were presumably “volunteers” (or plants that occur naturally due to seed dispersal) that were left to grow and reproduce. Of the 36 species associated with this study, nine were determined to be South Florida natives (*Bursera simaruba*, *Carica papaya*, *Ficus aurea*, *Hamelia patens*, *Lysiloma latisiliquum*, *Pimenta racemosa*, *Quercus virginiana*, *Sabal palmetto*, and *Swietenia mahogani*), of which four were found in UF plots (*B. simaruba*, *F. aurea*, *Q. virginiana*, and *S. mahogani*), and eight were documented in the FF plots (*B. simaruba*, *C. papaya*, *H. patens*, *L. latisiliquum*, *P. racemosa*, *Q. virginiana*, *S. palmetto*, and *S. mahogani*). Only 16 of the 36 taxa recorded in this study are considered “edible,” including the invasive *S. terebinthifolia*, which is commonly used as a spice in Caribbean cookery. While this aggressive species is typically present in the urban landscape via the easy dispersal of its seed (often through frugivorous birds), it is actively cultivated in some neighborhoods in Miami-Dade County (Cara A. Rockwell’s personal observations). Of the 16 edible taxa, five were found in the UF plots (see Table 1). In only one case did we find an edible species in a UF plot that was absent in the FF plots (*Mangifera indica*). *Musa* spp. was the most abundant edible species (found only in the FF plots), with 51 identified stems (or as in the case of proper botanical terminology, “pseudo-stems”), although it is possible that some of these “individual” banana plants were actually offshoots of the original banana pseudo-stems. Even though cultivated bananas reproduce through “suckers” from the underground rhizome network, we counted these clonal genets as individual stems, rather than as one entire banana plant.

3.1. Species Richness

Average species richness was determined to be significantly higher in the FF plots ($p = 0.02$; see Table 2 and Figure 5), with approximately 5.5 arborescent species in each FF plot, and 2.8 in the UF plots. Given the total number of 28 species in the FF plots, this relatively low number of species per plot suggests that species composition varies significantly across the 10 FF sites, at least per unit area. Indeed, in some cases, the 400 m² surveyed represents a small fraction of the total area (e.g., the largest FF garden surveyed in this study is close to 4,000 m²), so presumably, our sampling likely missed other arborescent species present in the gardens. Even though the more popular cultivated species (e.g., *C. papaya*, *Musa* spp.) are generally represented by multiple stems across the FF gardens, we did encounter clustering of certain species, potentially leading to underestimation (or overestimation in some cases) of some taxa within the 20 × 20 m plots.

Table 1. Identified species, South Florida native status, FISC category, and number of stems in 10 FF and 10 UF plots in Miami-Dade County, Florida.

Species	Common Name	Family	Edible	South Florida Native	FISC Category	FF	UF	Total
<i>Adonidia merrillii</i>	Christmas palm	Arecaceae				7	2	9
<i>Albizia lebeck</i>	Golden silk tree	Fabaceae			I	1	1	2
<i>Averrhoa carambola</i>	Starfruit	Oxalidaceae	✓			1	1	2
<i>Bursera simaruba</i>	Gumbo limbo	Burseraceae		✓		5	1	6
<i>Carica papaya</i>	Papaya	Caricaceae	✓	✓		19		19
<i>Chrysophyllum cainito</i>	Caimito	Sapotaceae	✓			1		1
<i>Citrus hystrix</i>	Kaffir lime	Rutaceae	✓			1		1
<i>Cnidioscolus aconitifolius</i>	Chaya, Mayan spinach	Euphorbiaceae	✓			2		2
<i>Cocos nucifera</i>	Coconut palm	Arecaceae	✓		II	1		1
<i>Cupaniopsis anacardioides</i>	Carrotwood	Sapindaceae			I	1		1
<i>Diospyros digyna</i>	Black sapote	Ebenaceae	✓			1		1
<i>Eriobotrya japonica</i>	Loquat, Japanese plum	Rosaceae	✓			1	1	2
<i>Ficus aurea</i>	Florida strangler fig	Moraceae		✓			1	1
<i>Ficus religiosa</i>	Sacred fig	Moraceae				1		1
<i>Hamelia patens</i>	Firebush	Rubiaceae		✓		4		4
<i>Handroanthus</i> sp.	Trumpet tree/ipê	Bignoniaceae				1		1
<i>Koelreuteria elegans</i>	Flamegold rain tree	Sapindaceae			II		2	2
<i>Ligustrum</i> sp. *	Privet	Oleaceae					1	1
<i>Lonchocarpus</i> sp.	Lancepod	Fabaceae					1	1
<i>Lysiloma latisiliquum</i>	False tamarind	Fabaceae		✓		1		1
<i>Mangifera indica</i>	Mango	Anacardiaceae	✓				2	2
<i>Moringa oleifera</i>	Moringa	Moringaceae	✓			9	1	10
<i>Morus nigra</i>	Black mulberry	Moraceae	✓			3		3
<i>Muntingia calabura</i>	Jamaican cherry, strawberry tree	Muntingiaceae	✓			2		2
<i>Musa</i> spp.	Banana	Musaceae	✓			51		51
<i>Peltophorum pterocarpum</i>	Yellow poinciana	Fabaceae					1	1
<i>Pimenta racemosa</i>	Bay rum	Myrtaceae	✓	✓		1		1
<i>Quercus virginiana</i>	Live oak	Fagaceae		✓		2	12	14
<i>Sabal palmetto</i>	Sabal palmetto	Arecaceae		✓		12		12
<i>Schefflera actinophylla</i>	Queensland umbrella tree	Araliaceae			I		1	1
<i>Schinus terebinthifolia</i>	Brazilian pepper	Anacardiaceae	✓		I		3	3
<i>Sesbania grandiflora</i>	Hummingbird tree	Fabaceae	✓			2		2
<i>Swietenia mahagoni</i>	West Indian mahogany	Meliaceae		✓		1	3	4
<i>Terminalia buceras</i>	Black olive	Combretaceae				2	6	8
<i>Terminalia catappa</i>	Tropical almond	Combretaceae			II	1		1
<i>Veitchia arecina</i>	Montgomery palm	Arecaceae				6		6
Total						140	40	180

Notes: Category I—capable of altering native plant communities; Category II—increased in abundance but not altering native plant communities. * There are two FISC-listed Category I invasive *Ligustrum* species in Florida (*L. lucidum* and *L. sinense*), but we have refrained from listing this individual as an invasive, given that we were unable to identify it to species without flowers.

Table 2. Student t-test results for comparison of 10 FF and 10 UF plots in Miami-Dade County, Florida.

	Sample Mean		Student t-Test Results
	FF (pre-hurricane)	UF (post-hurricane)	
Species richness	5.5	2.8	df = 9; t = 2.8; p = 0.02
Stem density ha ⁻¹	350	100	df = 9; t = 4.5; p ≤ 0.01
Canopy (%)	51.3	46.7	df = 9; t = 0.6; p = 0.57

3.2. Stem Density

Stem density between the FF and UF plots differed significantly ($p \leq 0.01$; see Table 2 and Figure 5). The total number of stems across the ten FF plots was calculated to be 140 (dbh ≥ 5 cm), and the total number of stems across the 10 UF plots was 40. However, it must be noted that the average girth of the UF trees tended to be larger than the FF plants (the most common UF tree was the large canopy species, *Q. virginiana*), thus allowing for fewer trees within the 400 m² area, given above- and belowground competition limitations. The mean number of stems in the FF plots was found to be 14 (350 stems ha⁻¹), and four (100 ha⁻¹) in the UF plots.

3.3. Canopy Coverage

Canopy coverage did not differ between FF ($\bar{x} = 51.3\%$) and UF ($\bar{x} = 46.7\%$) plots ($p = 0.57$; see Table 2 and Figure 5), despite the higher number of stems and species richness in the FF plots.

4. Discussion and Conclusions

Our research represents an important case study about urban FF systems and their importance in urban landscapes. While we did not specifically measure long-term food security in these neighborhoods as a function of high species diversity, we did confirm that our FF plots had a high number of edible arborescent species (14 of the 28 FF species, or 50%), as well as a significant number of edible taxa stems (95 of the total 140 stems found in the FF plots, or 68%). One could therefore make a strong case that the inclusion of edible species in a front yard or an urban park (as opposed to a UF with none) could benefit food security (and potentially nutrition). In the UF plots, we documented several edible taxa (*Averrhoa carambola*, *Eriobotrya japonica*, *M. indica*, *Moringa oleifera*, and *S. terebinthifolia*), but four of these were found only in the front yard of one private residence. This lack of edible species in the UF plots (particularly in the case of plots that were located in the public right-of-way) suggests that there may be some reticence on the part of local governments to plant edible tree species (see Hajzeri & Kwadwo, 2019; Kowalski & Conway, 2019; Ortez, 2021). Certainly, data collection from Florida International University's Grove ReLeaf UF project (<https://pg-cloud.com/ictb>) confirms

that few edible trees exist in the public right of way in Coconut Grove, a prominent neighborhood in the center of the city of Miami. According to their unpublished data set, only 45 of the total 319 arborescent species (which includes the herbaceous taxa *C. papaya* and *Musa* spp., as well as multiple palm species) are considered edible taxa. Of these taxa, *C. nucifera* (or coconut palm) is the most common edible species (326 occurrences in the database), although planting of *C. nucifera* is now prohibited by the City of Miami, due to the hazard it poses from falling fruits. Additionally, it has been identified by FISC as a Category II invasive plant. As another local example, the Miami-Dade County Street Tree Master Plan lists 63 recommended street trees, but only six taxa (*Celtis laevigata*, *Coccoloba diversifolia*, *Coccoloba uvifera*, *Noronhia emarginata*, *Pimenta dioica*, *Podocarpus* sp.) have edible or medicinal properties (Miami-Dade County, 2007).

Given the potential contributions of FF gardens to food security, lack of emphasis on edible species cultivation may be missing an important opportunity to address local food production, especially given the increased levels of food insecurity due to Covid-19 (see Gundersen et al., 2021; Niles et al., 2020). Indeed, edible tree species are often overlooked for urban canopy enhancement recommendations by municipal governments, despite the inclusion of FFs in the Food and Agriculture Organization's Guidelines on Urban and Peri-urban Forestry, which highlights their role in addressing hunger (Salbitano et al., 2016). In the case of the FFs in this study, certain species are known for high levels of production, depending on local site conditions, weather, management prescription (e.g., fertilization), and variety of the species in question. As an example, researchers from University of Florida's Institute of Food and Agricultural Sciences have determined that a mature grafted mango tree is capable of producing up to 100–150 kg/year (Crane et al., 2020), and the herbaceous papaya plant of producing 27–36 kg/year (Crane, 2018). Despite these obvious benefits, some of the hesitancy in planting edible species may have to do with concerns of maintenance, as well as urban pests, such as rats. A recent study from Brazil points to the low number of municipalities that encourage edible species, despite the increasing levels of food insecurity in Brazilian cities. Only five of the 49 municipalities surveyed considered the positive aspects of planting edible species in the UF; the rest of the UF management plans actively prohibited the planting of edible taxa (see Brito & Borelli, 2020).

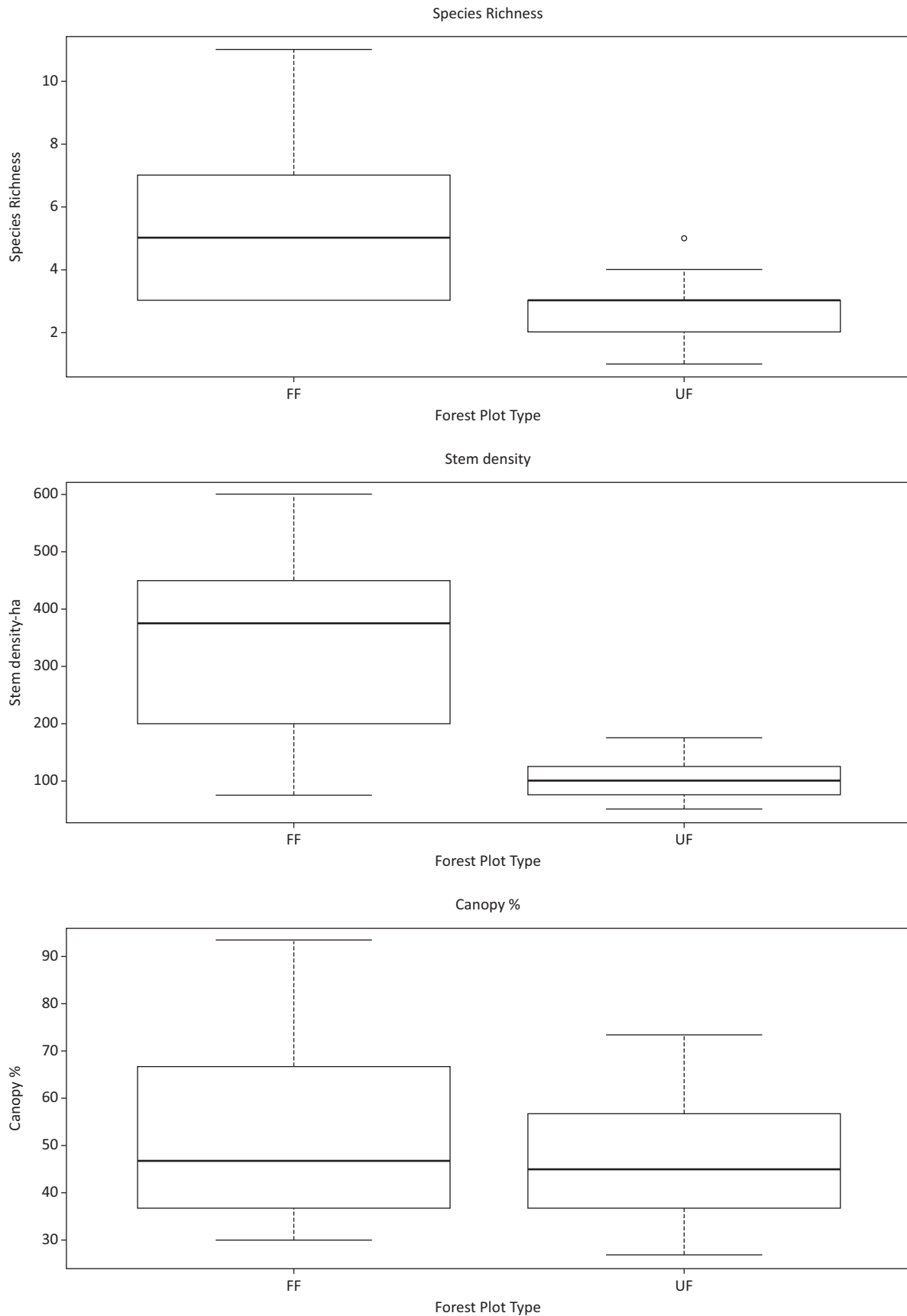


Figure 5. Paired student t-test results for species richness (number of species per hectare; $p = 0.02$), stem density (number of stems dbh ≥ 5 cm per hectare; $p \leq 0.01$), and canopy coverage (in %; $p = 0.57$) for 10 FF plots and 10 UF plots in Miami-Dade County, Florida.

The potential contributions of FF-based ecosystem services to food security are merely one aspect of this urban agroforestry system. The mix of edible and native species that we documented in the FF gardens compels us to discuss the integration of the native landscape concept with an edible garden focus. Indeed, there very well may be a benefit for FF gardens to include native taxa. For example, the Florida native firebush (*Hamelia patens*, of which we found four examples in one of the FF sites) is known to attract a rich diversity of pollinators, including hummingbirds, butterflies, and bees. Most of our sites are located in former pine rockland, an endangered habitat that now only exists in small patches (outside of Long Pine Key in Everglades National Park; see Possley et al., 2014). Presumably, planting native taxa in an edible garden, or even encouraging some of the native weeds, such as Spanish needles (*Bidens alba*; see Kleiman et al., 2021), could provide other ecosystem services, such as sources of food for native pollinators. This aspect of food forestry has not been fully explored, although it has been noted in more recent articles on the subject. Park et al. (2018) expressed the importance of using FFs to enhance native habitat restoration, even though FFs have not historically relied on native plant taxa. At the same time, this inclusion of native species has the potential to integrate FFs into a sustainable urban green infrastructure framework that reaches beyond the food security benefits. In a sense, these relatively small spaces could be viewed as “ecological stepping stones” that provide a buffer for native habitat patches in the relatively artificial

urban environment, as long as the cultivation of potentially invasive species is avoided.

Nevertheless, the presence of FISC-listed invasive plant taxa in both the FF and UF plots was notable (seven out of a total of 36 species identified in this study, or 19%). The subtropical climate and high levels of urbanization in South Florida lend well to the establishment and persistence of aggressive exotic taxa (Staudhammer et al., 2015). In most cases, the individual invasive plants documented in our study are likely volunteers that were not removed before they became reproductive. Some of this reticence to cut down invasive tree species could be due to lack of knowledge. Alternatively, the failure to act could be stemming from an actual appreciation of certain characteristics of the tree that led it to be introduced to the region in the first place. For example, *S. terebinthifolia* has long been favored by South American and Caribbean cultures for its medicinal properties (Dvorkin-Camiel & Whelan, 2008; Muhs et al., 2017) and for its spicy fruits, which can add a peppery flavor to traditional dishes (Jones, 1997). In at least one UF plot (an empty lot), the presence of *Schinus* is likely due to bird-related dispersal. In the other case (a middle school parking lot), it appeared as if the shrubs were planted as a hedge (see Figure 6). The school is located in a neighborhood known for its Haitian population, members of the community that would likely recognize the edible and medicinal properties of the species. Regardless, the importance of reducing the number of invasive taxa in urban areas cannot be overstated,

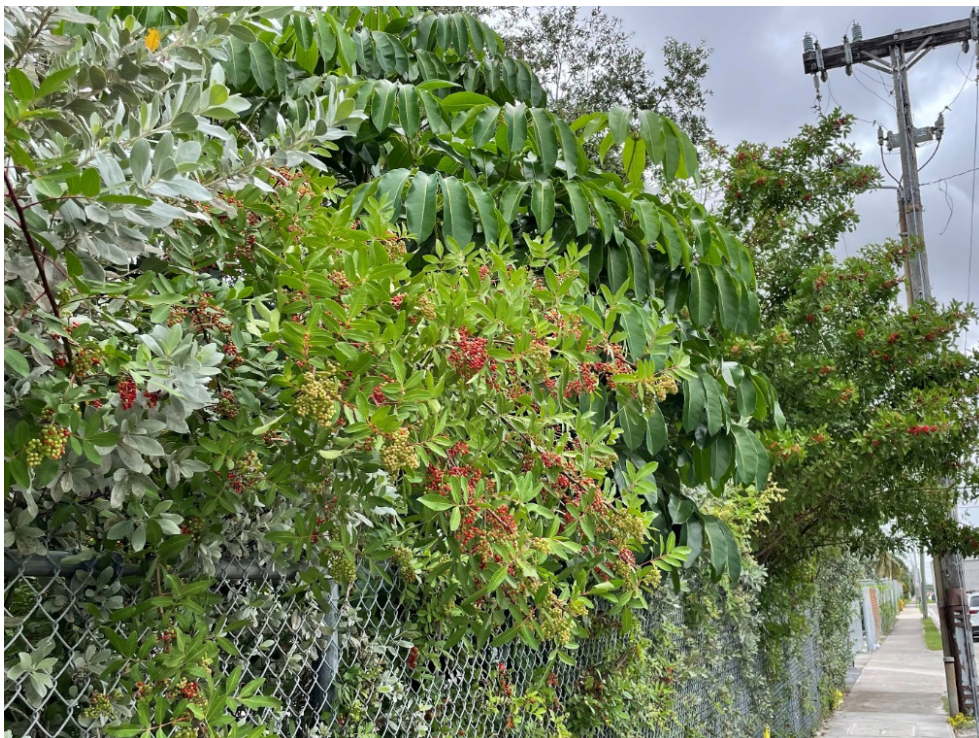


Figure 6. Planted hedge in one of the UF plots. Note the presence of the Brazilian pepper (red fruits, *Schinus terebinthifolia*), planted next to the Florida native, buttonwood (far left, *Cornocarpus erectus*), and the invasive Queensland umbrella tree (in between two stems of *S. terebinthifolia*; *Schefflera actinophylla*).

especially in the case of Category I species, which have the potential to outcompete (and displace) native plants and impact ecosystem services (Escobedo et al., 2010).

Additionally, we determined that canopy coverage in the FF plots was comparable to that of neighboring urban plots. While the FF canopy coverage did not surpass that of the neighboring UF plots, at the very least, our results suggest that FFs can potentially contribute towards the much-needed canopy cover in urban landscapes. Increased canopy cover in metropolitan areas has been demonstrated to reduce the urban heat island effect (Loughner et al., 2012; Ziter et al., 2019). As well, agroforestry studies in the pantropical regions of the world have long highlighted shade benefits of diverse edible tree-based systems, including links to sub-canopy plant health, water loss, and dietary diversity (e.g., Baudron et al., 2019; Tschardt et al., 2011). Understandably, large crown woody species are typically favored for urban canopies, but for those residents seeking to gain both shade and food benefits around their house, other species could be considered. Additionally, many temperate and tropical sub-canopy species require partial shade conditions. For example, banana and papaya were common taxa in this study. While they are herbaceous plants, their large size allows them to be considered “canopy” species, at least in the FF system. While it is doubtful that as individual plants they could provide the same amount of canopy as a large, long-lived live oak tree, they do provide a certain amount of shade. Few studies have looked at the benefits of urban cooling as it relates to the height of the trees, but at least one recent tropical study (Blaser-Hart et al., 2021) determined that low and elevated-canopy trees in cacao agroforestry systems were equally effective at mitigating climate extremes. Certainly, we may look to more research examples in tropical agroforestry systems for insights into the benefits of tree-based systems that are characterized by variable canopy heights.

Along those lines, one of the major critiques of the photographic interpretation method utilized by *i-Tree Canopy* is the reliance on visual assessment of the image by the user. Admittedly, visual interpretation is prone to error, primarily due to the variable quality of the Google Maps™ image (especially when focusing on smaller subsets of the landscape), which can lead to misinterpretation (Hwang & Wiseman, 2020). In our case, given our familiarity with the ground data (e.g., number of stems, locations of impermeable surfaces), we believe that we mitigated this risk of misinterpretation. Nevertheless, canopy coverage in a FF garden is admittedly variable when compared with the crown cover of a more typical UF. While the specific traits of canopy coverage (e.g., height, continuity, age) were not a focus in this study, we did observe patchy shade conditions in the FF gardens. We believe that the non-contiguous FF shade in our plots is primarily due to a combination of factors: (a) the variable height of upper and mid-canopy species, (b) the diverse leaf traits of certain FF species (e.g., the

small leaflets of the bipinnate or tripinnate leaves of *M. oleifera*), and (c) the design of the FF itself (i.e., heterogeneous distribution of multiple canopy layers; see Jacke & Toensmeier, 2005).

Few studies on urban FFs have explored the biological components (e.g., biodiversity, nutrient cycling, predator services, etc.) of these systems (but see Björklund et al., 2019; Park et al., 2018; Russo et al., 2017), even though their popularity is growing at a very rapid rate across global metropolitan areas. Indeed, several studies have highlighted the contributions of urban gardens and FFs to social resilience (see Chan et al., 2015; Shimp et al., 2019), but the ability of urban agroforests to enhance ecological resilience and maintain ecosystem services in the urban landscape (especially in the face of climate change) is less certain. Recent studies have pointed to the importance of the FF design, which incorporates three-dimensional vegetation layers into the garden layout, facilitating the availability of multiple niches for both plants and associated organisms (Björklund et al., 2019; Cannell et al., 1996; Park et al., 2018). Additionally, there is a growing need to adapt agroforestry systems to extreme climate events (presumably already a significant factor in warmer climates; see Barona et al., 2020; Dawson et al., 2010; Luedeling et al., 2014). Providing alternate forms of small-scale food production under canopy cover will have extensive applicability to other grassroots efforts across the nation, informing policymakers, practitioners, and urban community members about the efficacy of urban food generating efforts. We know that annual gardens can mitigate urban heat islands and benefit food security (see Andersson et al., 2019), but these ecosystem services are likely to be magnified in a perennial system that incorporates trees.

Acknowledgments

The authors would like to thank The Education Fund, The Education Fund President Linda Lecht, and Miami-Dade County Public Schools for access to the FF gardens. Additionally, we extend a special thanks to the following schools for allowing our field team to collect data in the FF gardens: Carrie P. Meek/Westview K-8 Center, W. J. Bryan Elementary, Gratigny Elementary, Twin Lakes Elementary, Laura Saunders Elementary, Riverside Elementary, Morningside K-8 Center, Sylvania Heights Elementary, Tropical Elementary, and Royal Palm Elementary. The efforts of team members Sean Brown, Blaire Kleiman, and Nisrine Toury made fieldwork for this project possible. We are indebted to Dr Alan Franck (University of Florida Herbarium), as well as the staff at the Montgomery Botanical Center for assistance with plant identification, and the FIU International Center for Tropical Botany at Kampong for storage of herbarium samples. Mimi Pink from The Education Fund provided substantial editorial assistance with previous versions of this manuscript. We would like to thank the editors and

two anonymous reviewers for their helpful suggestions. Additionally, we appreciate financial assistance from the Florida International University Agroecology Program and the US Department of Agriculture NIFA—Hispanic Serving Institutions Higher Education Grants Program (2016–38422-25542) for support of Alex Crow during this project. The research was also funded by a USDA Farm to School grant, as well as the US Environmental Protection Agency Environmental Education Grant (Region IV) awarded to The Education Fund, with FIU as its research collaborator. Any opinions, findings, conclusions, or recommendations expressed in this publication are those of the authors and do not necessarily reflect the view of the USDA or EPA. This is publication number 1429 from the Institute of Environment at Florida International University.

Conflict of Interests

The authors declare no conflict of interests.

References

- Ahern, J. (2013). Urban landscape sustainability and resilience: The promise and challenges of integrating ecology with urban planning and design. *Landscape Ecology*, 28(6), 1203–1212.
- Albrecht, S., & Wiek, A. (2021). Food forests: Their services and sustainability. *Journal of Agriculture, Food Systems, and Community Development*, 10(3), 91–105.
- Andersson, E., Langemeyer, J., Borgström, S., McPhearson, T., Haase, D., Kronenberg, J., Barton, D. N., Davis, M., Naumann, S., Röschel, L., & Baró, F. (2019). Enabling green and blue infrastructure to improve contributions to human well-being and equity in urban systems. *BioScience*, 69(7), 566–574. <https://doi.org/10.1093/biosci/biz058>
- Barona, C. O., Devisscher, T., Dobbs, C., Aguilar, L. O., Baptista, M. D., Navarro, N. M., da Silva Filho, D. F., & Escobedo, F. J. (2020). Trends in urban forestry research in Latin America & the Caribbean: A systematic literature review and synthesis. *Urban Forestry & Urban Greening*, 47, Article 126544. <https://doi.org/10.1016/j.ufug.2019.126544>
- Barron, S., Sheppard, S. R., & Condon, P. M. (2016). Urban forest indicators for planning and designing future forests. *Forests*, 7(9), Article 208.
- Baudron, F., Tomscha, S. A., Powell, B., Groot, J. C. J., Gergel, S. E., & Sunderland, T. (2019). Testing the various pathways linking forest cover to dietary diversity in tropical landscapes. *Frontiers in Sustainable Food Systems*, 3. <https://doi.org/10.3389/fsufs.2019.00097>
- Berkes, F., Colding, J., & Folke, C. (Eds.). (2008). *Navigating social-ecological systems: Building resilience for complexity and change*. Cambridge University Press.
- Björklund, J., Eksvärd, K., & Schaffer, C. (2019). Exploring the potential of edible forest gardens: Experiences from a participatory action research project in Sweden. *Agroforestry Systems*, 93(3), 1107–1118.
- Blaser-Hart, W. J., Hart, S. P., Oppong, J., Kyereh, D., Yeboah, E., & Six, J. (2021). The effectiveness of cocoa agroforests depends on shade-tree canopy height. *Agriculture, Ecosystems & Environment*, 322, Article 107676.
- Bowler, D. E., Buyung-Ali, L., Knight, T. M., & Pullin, A. S. (2010). Urban greening to cool towns and cities: A systematic review of the empirical evidence. *Landscape and Urban Planning*, 97, 147–155.
- Brito, V. V., & Borelli, S. (2020). Urban food forestry and its role to increase food security: A Brazilian overview and its potentialities. *Urban Forestry & Urban Greening*, 56, Article 126835. <https://doi.org/10.1016/j.ufug.2020.126835>
- Brown, K. H., & Jameton, A. L. (2000). Public health implications of urban agriculture. *Journal Public Health Policy*, 21, 20–39.
- Brundtland, G. H., & Khalid, M. (1987). *Our common future*. Oxford University Press.
- Buchmann, C. (2009). Cuban home gardens and their role in social-ecological resilience. *Human Ecology*, 37, 705–721.
- Campbell, L. K. (2014). Constructing New York City's urban forest: The politics and governance of the MillionTreesNYC campaign. In L. A. Sandberg, A. Bardekjian, & S. Butt (Eds.), *Urban forests, trees and greenspace: A policy perspective* (pp. 242–260). Routledge.
- Cannell, M. G. R., Van Noordwijk, M., & Ong, C. K. (1996). The central agroforestry hypothesis: The trees must acquire resources that the crop would not otherwise acquire. *Agroforestry Systems*, 34(1), 27–31.
- Castro, J., Ostoic, S. K., Cariñanos, P., Fini, A., & Sitzia, T. (2018). “Edible” urban forests as part of inclusive, sustainable cities. *Unasylva*, 69(250), 59–65.
- Chan, J., DuBois, B., & Tidball, K. G. (2015). Refuges of local resilience: Community gardens in post-Sandy New York City. *Urban Forestry & Urban Greening*, 14(3), 625–635.
- Clark, K. H., & Nicholas, K. A. (2013). Introducing urban food forestry: A multifunctional approach to increase food security and provide ecosystem services. *Landscape Ecology*, 28, 1649–1669.
- Crane, J. H. (2018). *Papaya growing in the Florida home landscape*. Institute of Food and Agricultural Sciences. <https://edis.ifas.ufl.edu/pdf/MG/MG05400.pdf>
- Crane, J. H., Wasielewski, J., Balerdi, C. F., & Maguire, I. (2020). *Mango growing in the Florida home landscape*. Institute of Food and Agricultural Sciences. <https://edis.ifas.ufl.edu/pdf/MG/MG21600.pdf>
- Dawson, A. (2017). *Extreme cities: The peril and promise of urban life in the age of climate change*. Verso Publishing.
- Dawson, I. K., Vinceti, B., Weber, J. C., Neufeldt, H., Rus-

- sell, J., Lengkeek, A. G., Kalinganire, A., Kindt, R., Lillesø, J.-P. B., Roshetko, J., & Jamnadass, R. (2010). Climate change and tree genetic resource management: Maintaining and enhancing the productivity and value of smallholder tropical agroforestry landscapes. A review. *Agroforestry Systems*, 81(1), 67–78. <https://doi.org/10.1007/s10457-010-9302-2>
- Dvorkin-Camiel, L., & Whelan, J. S. (2008). Tropical American plants in the treatment of infectious diseases. *Journal of Dietary Supplements*, 5(4), 349–372.
- Eiden, S. (2021). *The place of community food forests: A review and case study of community food forests and their untapped potential* [Master's thesis, University of Montana]. ScholarWorks. <https://scholarworks.umt.edu/etd/11745>
- Escobedo, F., Giannico, V., Jim, C. Y., Sanesi, G., & Laforteza, R. (2019). Urban forests, ecosystem services, green infrastructure and nature-based solutions: Nexus or evolving metaphors? *Urban Forestry & Urban Greening*, 37, 3–12.
- Escobedo, F., Kroeger, T., & Wagner, J. E. (2011). Urban forests and pollution mitigation: Analyzing ecosystem services and disservices. *Environmental Pollution*, 159(8/9), 2078–2087.
- Escobedo, F., Varela, S., Zhao, M., Wagner, J. E., & Zipperer, W. (2010). Analyzing the efficacy of subtropical urban forests in offsetting carbon emissions from cities. *Environmental Science & Policy*, 13(5), 362–372.
- Ferreira, A. J. D., Guilherme, R. I. M. M., & Ferreira, C. S. S. (2018). Urban agriculture, a tool towards more resilient urban communities? *Current Opinion in Environmental Science & Health*, 5, 93–97.
- Flocks, J., Escobedo, F., Wade, J., Varela, S., & Wald, C. (2011). Environmental justice implications of urban tree cover in Miami-Dade County, Florida. *Environmental Justice*, 4(2), 125–134.
- Food and Agriculture Organization of the United Nations. (2013). *Resilient livelihoods: Disaster risk reduction for food and nutrition security*. <https://www.fao.org/3/a-i3270e.pdf>
- Gao, J., & O'Neill, B. C. (2020). Mapping global urban land for the 21st century with data-driven simulations and shared socioeconomic pathways. *Nature Communications*, 11(1), Article 2302.
- Gotelli, N. J., & Colwell, R. K. (2001). Quantifying biodiversity: Procedures and pitfalls in the measurement and comparison of species richness. *Ecology Letters*, 4(4), 379–391.
- Groves, D. G., Knopman, D., Berg, N., Bond, C. A., Syme, J., & Lempert, R. J. (2019). *Adapting land use and water management plans to a changing climate in Miami-Dade and Broward Counties, Florida*. Rand Corporation.
- Gundersen, C., Hake, M., Dewey, A., & Engelhard, E. (2021). Food insecurity during Covid-19. *Applied Economic Perspectives and Policy*, 43(1), 153–161.
- Hajzeri, A., & Kwadwo, V. O. (2019). Investigating integration of edible plants in urban open spaces: Evaluation of policy challenges and successes of implementation. *Land Use Policy*, 84, 43–48.
- Hart, R. (1996). *Forest gardening: Cultivating an edible landscape*. Chelsea Green Publishing.
- Hochmair, H. H., Benjamin, A., Juhasz, L., Olivas, P., Gann, D., & Zhaohui, J. F. (2020). *Miami-Dade County urban tree canopy assessment*. American Forests.
- Hope, D., Gries, C., Zhu, W., Fagan, W. F., Redman, C. L., Grimm, N. B., Nelson, A. L., Martin, C., & Kinzig, A. (2003). Socioeconomics drive urban plant diversity. *Proceedings of the National Academy of Sciences*, 100(15), 8788–8792. <https://doi.org/10.1073/pnas.1537557100>
- Hwang, W. H., & Wiseman, P. E. (2020). Geospatial methods for tree canopy assessment: A case study of an urbanized college campus. *Arboriculture & Urban Forestry*, 46(1), 51–65.
- Jacke, D., & Toensmeier, E. (2005). *Edible forest gardens: Ecological design and practice for temperate-climate permaculture* (Vol. 2). Chelsea Green Publishing.
- Jensen, P. D., & Orfila, C. (2021). Mapping the production-consumption gap of an urban food system: An empirical case study of food security and resilience. *Food Security*, 13(3), 551–570.
- Johnson, O. W., Han, J. Y. C., Knight, A. L., Mortensen, S., Aung, M. T., Boyland, M., & Resurrección, B. P. (2020). Intersectionality and energy transitions: A review of gender, social equity and low-carbon energy. *Energy Research & Social Science*, 70, Article 101774.
- Jones, D. (1997). Economic uses. In A. Ferriter & D. Clark (Eds.), *Brazilian pepper management plan for Florida* (pp. 9–10). Florida Exotic Pest Plant Council.
- Jose, S. (2009). Agroforestry for ecosystem services and environmental benefits: An overview. *Agroforestry Systems*, 76(1), 1–10.
- Keenan, J. M., Hill, T., & Gumber, A. (2018). Climate gentrification: From theory to empiricism in Miami-Dade County, Florida. *Environmental Research Letters*, 13(5), Article 054001.
- Kleiman, B., Koptur, S., & Jayachandran, K. (2021). Beneficial interactions of weeds and pollinators to improve crop production. *Journal of Research in Weed Science*, 4(2), 151–164.
- Kowalski, J. M., & Conway, T. M. (2019). Branching out: The inclusion of urban food trees in Canadian urban forest management plans. *Urban Forestry & Urban Greening*, 45, Article 126142.
- Laferrière, J. E. (1987). A central location method for selecting random plots for vegetation surveys. *Vegetatio*, 71(2), 75–77.
- Landry, S. M., & Chakraborty, J. (2009). Street trees and equity: Evaluating the spatial distribution of an urban amenity. *Environment and Planning A*, 41(11), 2651–2670.
- Leong, M., Dunn, R. R., & Trautwein, M. D. (2018). Biodiversity and socioeconomics in the city: A review

- of the luxury effect. *Biology Letters*, 14(5), Article 20180082.
- Locke, D. H., Hall, B., Grove, J. M., Pickett, S. T. A., Ogden, L. A., Aoki, C., Boone, C. G., & O'Neil-Dunne, J. P. M. (2021). Residential housing segregation and urban tree canopy in 37 US cities. *npj Urban Sustainability*, 1, Article 15. <https://doi.org/10.1038/s42949-021-00022-0>
- Loughner, C. P., Allen, D. J., Zhang, D. L., Pickering, K. E., Dickerson, R. R., & Landry, L. (2012). Roles of urban tree canopy and buildings in urban heat island effects: Parameterization and preliminary results. *Journal of Applied Meteorology and Climatology*, 51(10), 1775–1793.
- Lovell, S. T., Dupraz, C., Gold, M., Jose, S., Revord, R., Stanek, E., & Wolz, K. J. (2017). Temperate agroforestry research: Considering multifunctional woody polycultures and the design of long-term field trials. *Agroforestry Systems*, 92, 1397–1415.
- Luedeling, E., Kindt, R., Huth, N. I., & Koenig, K. (2014). Agroforestry systems in a changing climate: Challenges in projecting future performance. *Current Opinion in Environmental Sustainability*, 6, 1–7.
- Magis, K. (2010). Community resilience: An indicator of social sustainability. *Society and Natural Resources*, 23(5), 401–416.
- Mburu, S. W., Koskey, G., Kimiti, J. M., Ombori, O., Maingi, J. M., & Njeru, E. M. (2016). Agrobiodiversity conservation enhances food security in subsistence-based farming systems of Eastern Kenya. *Agriculture & Food Security*, 5(1), Article 19.
- McCoy, L., Crow, A., Perez, J., Guimarães, E. R., La Belle, D., Recinos, E., Pink, M., Herrera Osorio, B., Baraloto, C., Jungman, N., & Rockwell, C. A. (2021). *Common tropical food forest plants of South Florida*. FIU Institute of Environment; The Education Fund. https://www.educationfund.org/file_download/inline/96a21b03-266f-48f8-beaf-f9ef6ade0ee9
- McLain, R., Poe, M., Hurley, P. T., Lecompte-Mastenbrook, J., & Emery, M. R. (2012). Producing edible landscapes in Seattle's urban forest. *Urban Forestry & Urban Greening*, 11(2), 187–194.
- Meléndez-Ackerman, E. J., Trujillo, A., Nitch, C., Ramsey, M., Branoff, B., & Olivero-Lora, S. (2018). *Ecological vulnerability of urban green infrastructure to Hurricanes Irma and Maria in Puerto Rico*. US Forest Service.
- Mellisse, B. T., Descheemaeker, K., Giller, K. E., Abebe, T., & van de Ven, G. W. (2018). Are traditional home gardens in southern Ethiopia heading for extinction? Implications for productivity, plant species richness and food security. *Agriculture, Ecosystems & Environment*, 252, 1–13.
- Miami-Dade County. (2007). *A greenprint for our future: Miami-Dade County street master plan*.
- Michon, G., Mary, F., & Bompard, J. (1986). Multistoried agroforestry garden system in West Sumatra, Indonesia. *Agroforestry Systems*, 4(4), 315–338.
- Miller, R. P., & Nair, P. K. R. (2006). Indigenous agroforestry systems in Amazonia: From prehistory to today. *Agroforestry Systems*, 66(2), 151–164.
- Miller, R. W., Hauer, R. J., & Werner, L. P. (2015). *Urban forestry: Planning and managing urban greenspaces*. Waveland Press.
- Moll, G. (1989). In search of an ecological urban landscape. In G. Moll & S. Ebenreck (Eds.), *Shading our cities: A resource guide for urban and community forests* (pp. 13–24). Island Press.
- Muhs, A., Lyles, J. T., Parlet, C. P., Nelson, K., Kavanaugh, J. S., Horswill, A. R., & Quave, C. L. (2017). Virulence inhibitors from Brazilian peppertree block quorum sensing and abate dermonecrosis in skin infection models. *Scientific Reports*, 7(1), Article 42275.
- Nair, V. D., & Graetz, D. A. (2004). Agroforestry as an approach to minimizing nutrient loss from heavily fertilized soils: The Florida experience. *Agroforestry Systems*, 61, 269–279.
- Niles, M. T., Bertmann, F., Belarmino, E. H., Wentworth, T., Biehl, E., & Neff, R. (2020). The early food insecurity impacts of Covid-19. *Nutrients*, 12(7), Article 2096.
- Nowak, D. J., & Crane, D. E. (2002). Carbon storage and sequestration by urban trees in the USA. *Environmental Pollution*, 116(3), 381–389.
- Nowak, D. J., & Greenfield, E. J. (2018). Declining urban and community tree cover in the United States. *Urban Forestry & Urban Greening*, 32, 32–55. <https://doi.org/10.1016/j.ufug.2018.03.006>
- Nowak, D. J., Maco, S., & Binkley, M. (2018). i-Tree: Global tools to assess tree benefits and risks to improve forest management. *Arboricultural Consultant*, 51(4), 10–13.
- Ordóñez, C., & Duinker, P. N. (2014). Assessing the vulnerability of urban forests to climate change. *Environmental Reviews*, 22(3), 311–321.
- Ortez, P. (2021). *Foraging in Tucson's parks: Interest, barriers, and opportunities* [Bachelor's dissertation, University of Arizona]. The University of Arizona Libraries. <https://repository.arizona.edu/handle/10150/658254>
- Paquette, A., Bouchard, A., & Cogliastro, A. (2006). Survival and growth of under-planted trees: A meta-analysis across four biomes. *Ecological Applications*, 16(4), 1575–1589.
- Park, H., & Higgs, E. (2018). A criteria and indicators monitoring framework for food forestry embedded in the principles of ecological restoration. *Environmental Monitoring and Assessment*, 190(3), Article 113.
- Park, H., Turner, N., & Higgs, E. (2018). Exploring the potential of food forestry to assist in ecological restoration in North America and beyond. *Restoration Ecology*, 26(2), 284–293.
- Philpott, S. M., & Bichier, P. (2017). Local and landscape drivers of predation services in urban gardens. *Ecological Applications*, 27(3), 966–976.
- Possley, J. E., Maschinski, J. M., Maguire, J., & Guerra, C.

- (2014). Vegetation monitoring to guide management decisions in Miami's urban pine rockland preserves. *Natural Areas Journal*, 34(2), 154–165.
- Russo, A., Escobedo, F. J., Cirella, G. T., & Zerbe, S. (2017). Edible green infrastructure: An approach and review of provisioning ecosystem services and disservices in urban environments. *Agriculture, Ecosystems & Environment*, 242, 53–66.
- Salbitano, F., Borelli, S., Conigliaro, M., & Chen, Y. (2016). *Guidelines on urban and peri-urban forestry*. Food and Agriculture Organization of the United Nations.
- Schell, C. J., Dyson, K., Fuentes, T. L., Roches, S. D., Harris, N. C., Miller, D. S., Woelfle-Erskine, C. A., & Lambert, M. R. (2020). The ecological and evolutionary consequences of systemic racism in urban environments. *Science*, 369(6510). <https://doi.org/10.1126/science.aay4497>
- Shimpo, N., Wesener, A., & McWilliam, W. (2019). How community gardens may contribute to community resilience following an earthquake. *Urban Forestry & Urban Greening*, 38, 124–132.
- Soemarwoto, O. (1987). Homegardens: A traditional agroforestry system with a promising future. In H. A. Stepler & P. K. R. Nair (Eds.), *Agroforestry: A decade of development* (pp. 157–170). International Council for Research in Agroforestry.
- Staudhammer, C. L., Escobedo, F. J., Holt, N., Young, L. J., Brandeis, T. J., & Zipperer, W. (2015). Predictors, spatial distribution, and occurrence of woody invasive plants in subtropical urban ecosystems. *Journal of Environmental Management*, 155, 97–105.
- Tendall, D. M., Joerin, J., Kopainsky, B., Edwards, P., Shreck, A., Le, Q. B., Kruetli, P., Grant, M., & Six, J. (2015). Food system resilience: Defining the concept. *Global Food Security*, 6, 17–23. <https://doi.org/10.1016/j.gfs.2015.08.001>
- Thiesen, T., Bhat, M. G., Liu, H., & Rovira, R. (2022). An ecosystem service approach to assessing agroecosystems in urban landscapes. *Land*, 11(4), Article 469.
- Tscharntke, T., Clough, Y., Bhagwat, S. A., Buchori, D., Faust, H., Hertel, D., Hölscher, D., Juhrbandt, J., Kessler, M., Perfecto, I., Scherber, C., Schroth, G., Veldkamp, E., & Wanger, T. C. (2011). Multifunctional shade-tree management in tropical agroforestry landscapes: A review. *Journal of Applied Ecology*, 48(3), 619–629. <https://doi.org/10.1111/j.1365-2664.2010.01939.x>
- US Forest Service. (2011). *i-Tree Canopy technical notes*.
- Wu, J. (2010). Urban sustainability: An inevitable goal of landscape research. *Landscape Ecology*, 25(1), 1–4.
- Zhang, W., Dulloo, E., Kennedy, G., Bailey, A., Sandhu, H., & Nkonya, E. (2018). Biodiversity and ecosystem services. In C. Campanhola & S. Pandey (Eds.), *Sustainable food and agriculture: An integrated approach* (pp. 137–152). Food and Agriculture Organization of the United Nations.
- Ziter, C. D., Pedersen, E. J., Kucharik, C. J., & Turner, M. G. (2019). Scale-dependent interactions between tree canopy cover and impervious surfaces reduce daytime urban heat during summer. *Proceedings of the National Academy of Sciences*, 116(15), 7575–7580.

About the Authors



Cara A. Rockwell holds a PhD in tropical forest ecology from University of Florida. She is currently a research faculty member at Florida International University's Institute of Environment. Cara worked in South America for more than 15 years, investigating the impacts of timber harvesting on bamboo-dominated forest stands and Brazil nut-rich forests, as well as forest restoration through post-harvest silvicultural techniques. In addition to her ongoing projects in the Southwestern Amazon region, she has begun developing projects in South Florida, where she is focusing on ecosystem services in urban agroforestry systems, as well as recovery of native ecosystems post-disturbance.



Alex Crow graduated with a B.S. in environmental studies in 2019 from Florida International University's Department of Earth and Environment. Born and raised in Miami, he loves the unique blend of culture, people, and food that his city has to offer. He has a passion for the Everglades, and his research interests include native insect ecology, tropical and subtropical forestry, and apiculture. Alex worked in the Miami-Dade County Public School food forests from 2018–2021. He is now a restoration biologist with the Institute for Regional Conservation in Delray Beach, Florida.



Érika R. Guimarães holds a bachelor's degree in environmental engineering from Federal University of Rio de Janeiro, Brazil. In her thesis, Érika researched wastewater treatment with plants, using evapotranspiration beds. In Miami, she has volunteered on projects focused on the evaluation of ecosystem services in food forests. Érika is a co-author of the booklet *Common Tropical Food Forest Plants of South Florida*, published by FIU Institute of Environment and The Education Fund. She is now pursuing her Master of Science degree in environmental studies in the Department of Earth and Environment at Florida International University.



Eduardo Recinos, senior program manager for The Education Fund’s Food Forests for Schools is an artist and teacher of 10+ years who earned a BFA and Teaching Certificate from Florida International University. He is an expert school gardener, having previously served as the lead garden teacher at Twin Lakes Elementary in Hialeah, Florida where he created a food forest that became integrated into all classroom lessons and where he led the innovative school-wide use of garden produce in the cafeteria. Eddie continues to apply his knowledge of curriculum, forest gardening, and nutrition to build the program, including the design of each Food Forest, integration of Food Forests in daily lessons across all subjects, and oversight of a dozen expert gardeners who visit schools to maintain and team-teach.



Deborah La Belle, program manager for The Education Fund’s Food Forests for Schools, is a classically trained chef who worked with renowned James Beard awardee Michele Bernstein. A graduate of Johnson & Wales College of Culinary Arts, Deborah’s knowledge of nutrition and our unique crops has propelled our program forward. Prior to joining The Education Fund, she taught cooking classes to Miami-Dade County Public Schools students, and ran her own home farm from which she created products for sale. Deborah’s knowledge and skills allow her to work effectively with teachers, students, parents, as well as cafeteria personnel applying her knowledge of cooking, forest gardening, and nutrition to build the program.