

## Chemical dependency and violence in the female universe: an integrative review

Tolentino, Edigar de Sousa; Oliveira, Ana Karla Sousa de; Monteiro, Claudete Ferreira de Souza; Guedes da Silva Júnior, Fernando José

Veröffentlichungsversion / Published Version  
Zeitschriftenartikel / journal article

### Empfohlene Zitierung / Suggested Citation:

Tolentino, E. d. S., Oliveira, A. K. S. d., Monteiro, C. F. d. S., & Guedes da Silva Júnior, F. J. (2016). Chemical dependency and violence in the female universe: an integrative review. *Revista de Pesquisa: Cuidado é Fundamental Online*, 8(3), 4681-4688. <https://doi.org/10.9789/2175-5361.2016.v8i3.4681-4688>

### Nutzungsbedingungen:

Dieser Text wird unter einer CC BY-NC Lizenz (Namensnennung-Nicht-kommerziell) zur Verfügung gestellt. Nähere Auskünfte zu den CC-Lizenzen finden Sie hier:  
<https://creativecommons.org/licenses/by-nc/4.0/deed.de>

### Terms of use:

This document is made available under a CC BY-NC Licence (Attribution-NonCommercial). For more information see:  
<https://creativecommons.org/licenses/by-nc/4.0>

## Dependência química e violência no universo feminino: revisão integrativa

Chemical dependency and violence in the female universe: an integrative review

Adicción y violencia en el universo femenina: una revisión integradora

*Fernando José Guedes da Silva Júnior<sup>1</sup>, Edigar de Sousa Tolentino<sup>2</sup>, Ana Karla Sousa de Oliveira<sup>3</sup> e Claudete Ferreira de Souza Monteiro<sup>4</sup>.*

### How to quote this article:

Júnior FJGS; Tolentino ES; de Oliveira AKS; et al. Chemical dependency and violence in the female universe: an integrative review. Rev Fund Care Online. 2016 jul/set; 8(3):4681-4688. DOI: <http://dx.doi.org/10.9789/2175-5361.2016.v8i3.4681-4688>

### ABSTRACT

**Objective:** to review the scientific evidence on the links between substance abuse and violence in the female universe. **Methods:** integrative review on the basis of Latin American and Caribbean Literature on Health Sciences Data, Medical Literature Analysis and Retrieval System Online and Cumulative Index to Nursing and Allied Health. The revision process was guided by the question: what is the relationship between substance abuse and violence in the feminine universe? **Results:** from the literature search we identified 16 primary studies. The synthesis of knowledge showed multiple face of violence against women, the risk factors associated with emphasis on the use of psychoactive substances. **Conclusion:** evidence suggests that violence against women can be physical, psychological and sexual. These bring significant implications for the physical and mental health of the victim, making emergent the implementation of effective measures that help to reduce this problem and to minimize the consequences.

**Descriptors:** violence against women; drug users; mental health; nursing.

<sup>1</sup> Nurse, Master and PhD in Nursing from the Federal University of Piauí (UFPI), Professor of UFPI. Email: [fernandoguedesjr@gmail.com](mailto:fernandoguedesjr@gmail.com).

<sup>2</sup> Nurse by UFPI. Email: [edigarst@gmail.com](mailto:edigarst@gmail.com).

<sup>3</sup> Nurse, Psychologist, Master in Health Decision and models from the Federal University of Paraíba (UFPB). Professor of UFPI. Email: [anakarla\\_deoliveira@yahoo.com.br](mailto:anakarla_deoliveira@yahoo.com.br).

<sup>4</sup> Nurse, PhD, Professor of Undergraduate and Graduate Nursing UFPI Program. Fellow Research Productivity CNPq-Brazil. Email: [claudetefmonteiro@hotmail.com](mailto:claudetefmonteiro@hotmail.com).

## RESUMO

**Objetivo:** analisar as evidências científicas sobre as relações entre dependência química e a violência no universo feminino. **Metodologia:** revisão integrativa nas bases de dados Literatura Latino-Americana e Caribenha em Ciências da Saúde, Medical Literature Analysis and Retrieval System Online e Cumulative Index to Nursing and Allied Health. O processo revisional foi norteado pela pergunta: qual a relação entre dependência química e violência no universo feminino? **Resultados:** a partir da busca na literatura foram identificados 16 estudos primários. A síntese do conhecimento evidenciou a múltipla face da violência contra a mulher, os fatores de risco associados com ênfase no uso de substâncias psicoativas. **Conclusão:** as evidências apontam que a violência contra a mulher pode ser física, psicológica e sexual. Estas trazem repercussões significativas para a saúde física e mental da vítima, tornando emergente a implementação de medidas efetivas que contribuam para a redução dessa problemática e a minimização dessas consequências.

**Descritores:** violência contra a mulher; usuários de drogas; saúde mental; enfermagem.

## RESUMÉN

**Objetivo:** revisar la evidencia científica sobre la relación entre el abuso de sustancias y la violencia en el universo femenino. **Metodología:** una revisión integradora sobre la base de América Latina y el Caribe Literatura en Ciencias de la Salud de datos, análisis de la literatura médica y de recuperación del sistema en línea y Cumulative Index de Enfermería y Salud Aliada. El proceso revisional fue guiado por la pregunta: ¿cuál es la relación entre el abuso de sustancias y la violencia en el universo femenino? **Resultados:** a partir de la búsqueda bibliográfica se identificaron 16 estudios primarios. La síntesis de los conocimientos mostró rostro múltiple de la violencia contra la mujer, los factores de riesgo asociados con énfasis en el uso de sustancias psicoactivas. **Conclusión:** la evidencia sugiere que la violencia contra las mujeres puede ser física, psicológica y sexual. Estos traer importantes consecuencias para la salud física y mental de la víctima, por lo que es emergente la implementación de medidas eficaces que ayuden a reducir este problema y reducir al mínimo las consecuencias.

**Descriptor:** la violencia contra las mujeres; usuarios de drogas; salud mental; enfermería.

## INTRODUCTION

The chemical dependency and the various situations of violence are social and public health problems that deserve attention in current discussions, especially those related to their confrontations. These events are conducted by the social vulnerability, after all, no social class is protected from violence in the various forms it is presented, nor from the consumption of psychoactive substances.

The phenomenon of drug addiction, each day, is becoming more noteworthy and challenging health professionals.<sup>1</sup> It is considered to be a heterogeneous disorder which has heterogeneous dominance, as it affects people in different ways, for different reasons, in different contexts and circumstances.

The abuse of psychoactive substances is one of the most disabling disorders and has a multifactorial etiology,

involving genetic, social, psychological and environmental components. Uncontrolled and compulsively use may have a serious effect on the individual's health, as it also affects relationships and social positions.<sup>2</sup>

The repercussions of this practice in the family system must be noted once they cause many issues and losses, including: relationships decay, especially with spouses and children; the studies are affected, contributing to school dropout; work is therefore co-responsible for significant impact on absenteeism rates, and it also generates delays and inability to perform the tasks that reflect the society as a whole.<sup>3-4</sup>

Still under this social perspective, it is imperative to point out that in recent years there has been substantial increase in the number of women who use alcohol and other drugs. Many of such women are admitted in public hospitals, with clinical, surgical and obstetrical complications resulting from addictive behavior.<sup>5</sup>

Another factor that enhances the concerns about the drug phenomenon is the existence of a causal link with different types of violence situations, being the woman one of the main protagonists. This fact not only co-exist in a particular class, age group or population, but it also focuses on certain groups in society, such as women, children, adolescents and the elderly - which are the most victimized.<sup>6</sup>

Violence is the result of the interaction of various factors, however, the use of drugs, poor education, social inequality, and poor infrastructure in the communities seem to increase the dimensions of this problem, increasing the risk for women who experience this situation in a more frequent way.<sup>7</sup>

Violence against women can be seen as a problem that arises from the strengthening of the gender inequality idea, which poses severe impacts as the creation of hierarchical categories - fostering the women subservience in gender relations, since they are considered submissive.<sup>8</sup>

Thus, violence against women is the result of a cultural, political and religious construction, grounded on the differences between genders. This construction became natural and has legitimated the asymmetry of power - having as a justification the dominance of men over women. As a result, the most common form of violence against women is committed by an intimate partner, occurring among people of different races, religions, economic and social classes.<sup>7</sup>

It is recognized that violence against women is a violation of human rights, since it is a violation of their status as citizens, their freedom to come and go safely, their right to express themselves and have respected their physical, mental and social integrity. In this sense, gender inequalities are translated into unbalanced power relations.<sup>9-10</sup>

Regarding to the addressed above, we must reflect on the approaches used in the search for fighting these phenomena, since both go beyond the biomedical dimensions, requiring health professionals to understand the process of health and disease in a very broad way - covering the specificities of women as a social subject. Thus, it's of primary importance

to understand women's integration in contemporary society, as well as the social relations they establish and the gender inequalities that pervade these relationships.<sup>11</sup>

Nowadays, nursing has to be properly prepared for facing new situations, especially in the knowledge of the factors that can lead to problems caused by the use of psychoactive drugs, and its relations with the violence suffered by women in society - may they be physical, psychological or sexual.

The importance of this study is immeasurable for nursing and society, since its obtained information provide adequate guidance for the resolution of problems related to the use of psychoactive substances and their relations with the violence suffered by women - searching for effective and routine measures for better care, prevention and promotion of women's health. The objective of this study is to analyze the scientific evidence on the relations between substance abuse and violence in the female universe.

## METHODS

This is a literature integrative review, considered by scholars as one of the research methods used in the Evidence-Based Practice (EBP) which provides subsidy for the incorporation of these in clinical practice.<sup>12-3</sup>

As the theme to be explored is vast, boundaries were set. The guiding question to be investigated from this integrative review is: what are the relations between addiction and violence in the feminine universe?

For search of articles, we used the internet to access the databases: Latin American and Caribbean Health Sciences (LILACS), Medical Literature Analysis and Retrieval System Online (MEDLINE) via PubMed and Cumulative Index to Nursing and Allied Health Literature (CINAHL).

The research took place in May and June of 2014. For the literature were used controlled descriptors present in the Descriptors in Health Sciences (DECS), the Medical Subject Headings (MeSH Terms) and CINAHL Headings. Besides these an uncontrolled descriptor was used (Table 1).

**Table 1:** Databases used to search the primary studies, controlled and uncontrolled descriptors used in the databases. Picos - PI 2014.

Database	Controlled Descriptors	Uncontrolled Descriptors
LILACS	Substance Use Related Disorders	Legal drugs
	Violence against women	
	Alcoholism	
	Illegal drugs	
MEDLINE	Substance-Related Disorders	-
	Alcoholism	
	Illegal Drugs	
	Violence	

Database	Controlled Descriptors	Uncontrolled Descriptors
CINAHL	Substance-Related Disorders Alcoholism Illegal Drugs Violence	-

To the searching operation, various combinations of descriptors from the use of Boolean and marker were conducted, as described in Table 2.

**Table 2:** Databases used, with the ratio of combinations of descriptors for the search of primary articles. Picos - PI 2014.

Database	Descriptors Combinations
LILACS	Substance Use Related Disorders and Violence against women
	Alcoholism and violence against women
	Illegal drugs and violence against women
	Legal drugs and violence against women
MEDLINE	Substance-Related Disorders and Violence
	Alcoholism and Violence
	Illegal Drugs and Violence
CINAHL	Substance-Related Disorders and Violence
	Alcoholism and Violence
	Illegal Drugs and Violence

The following inclusion criteria for primary studies were established: papers discussing the theme of the relations between substance abuse and violence in the female population, published in English, Spanish and Portuguese.

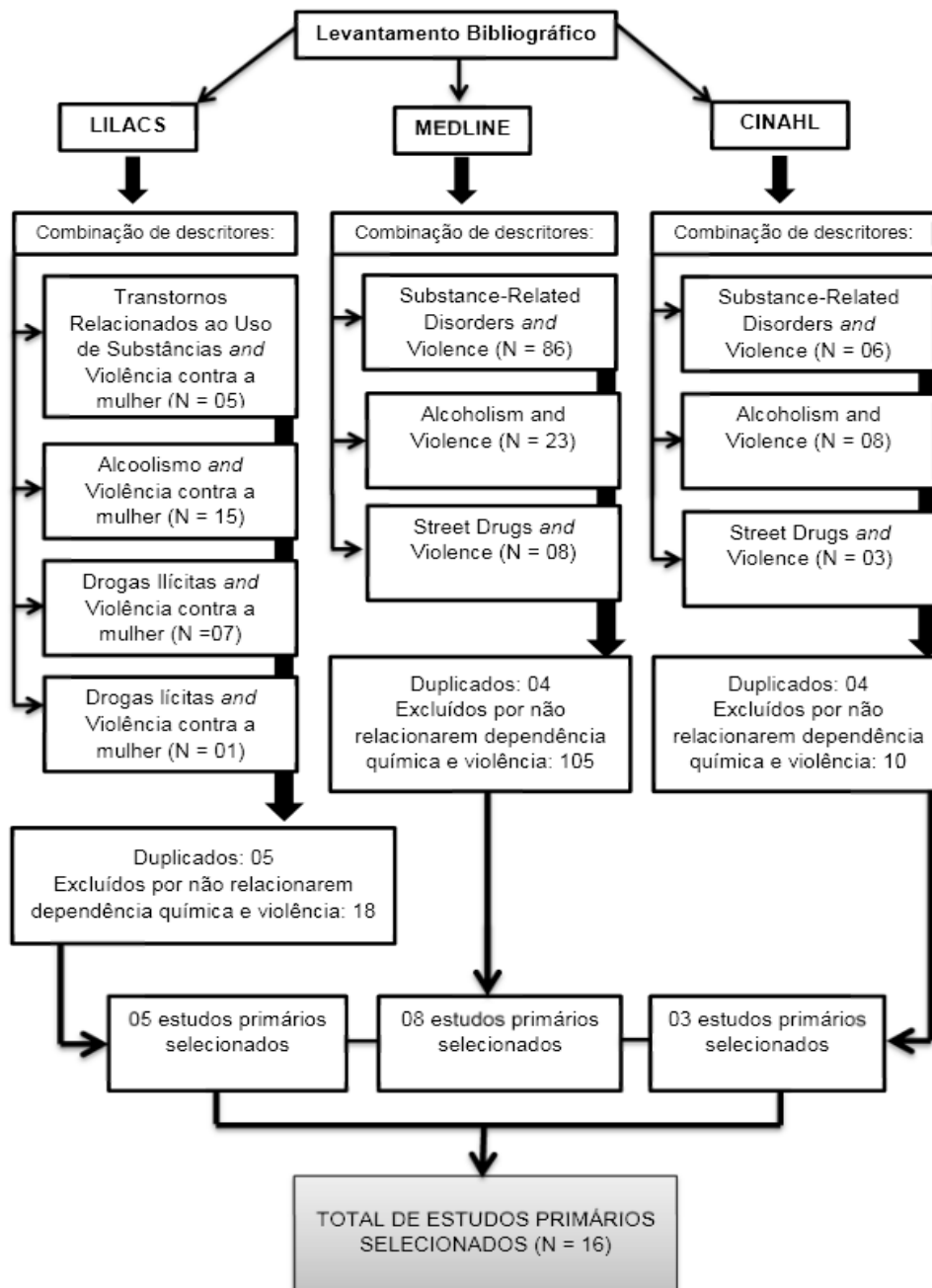
After the selection of studies by reading the title and abstract, the articles that met the inclusion criteria were analyzed in full and the data were collected through the instrument.<sup>14</sup>

The obtained data from the studies permit to observe, describe and classify data in order to group the knowledge produced according to the theme of the study. It is noteworthy that a critically and detailed analysis of the articles included in the study was executed comparing the theoretical knowledge, the implications and conclusions from the integrative review.

## RESULTS E DISCUSSION

The search on the electronic databases LILACS, MEDLINE and CINAHL, provided the acquisition of 16 scientific articles for the sample composition of the present integrative review. Figure 1 presents a flow chart of literature in the databases LILACS, MEDLINE and CINAHL.

**Figure 1:** Selection process of studies by the databases. Picos - PI 2014.



Initially, a descriptive analysis about the general characteristics of this was executed, namely: title, author, year of publication, study design, publishing periodic, as shown in Chart 1.

Regarding the year of publication of the selected studies, we can see a greater number of works published in 2013 with three articles. Considering the number of items by periodic, it appears that these were published on 12 different publications. Among them, the Latin Am Nursing Journal stands out as one that showed the largest quantity of items (three). Then come the Drug. Alcohol Depend, and the Rev. Public Health with two publications each. The others had only

one publication. They are: Acta Paul Enferm, Addict Behav, Fri Transm Dis, The New England Journal of Medicine, Ann Behav Med, Violence Against Women, Rev. Enferm. UERJ, Online Brazilian Journal of Nursing. Considering the nature of the studies, it was found that the majority of the publications (12) was given by quantitative articles.

**Table 1:** Presentation of the analyzed studies on the relationship between substance abuse and violence in the female universe. Picos - PI 2014.

Origin	Title	Authors/ Year	Design	Periodic
LILACS	Prevalence of intimate partner violence reported by mothers	Marcacine <i>et al.</i> (2013) <sup>15</sup>	Quantitative	Acta Paul Enferm
LILACS	Physical violence against women in the health professional perspective	Moreira <i>et al.</i> (2008) <sup>16</sup>	Qualitative	Rev Saúde Pública
LILACS	Violence against women by an intimate partner in an economically vulnerable urban area, Brasília, DF	Moura <i>et al.</i> (2009) <sup>17</sup>	Quantitative	Rev Saúde Pública
LILACS	Alcohol consumption and domestic violence against women: study with Mexican university female students	Paredes; Ventura (2010) <sup>18</sup>	Quantitative	Rev. Latino-Am. Enfermagem
LILACS	Domestic violence, use of drugs by the couple, from the mistreated woman's perspective	Bonifaz; Nakano (2004) <sup>19</sup>	Qualitative	Rev Latino-Am Enfermagem
MEDLINE	Drug consumption and labour violence against female workers, a multi-site study: Mexico, Peru, Brazil	Castillo <i>et al.</i> (2006) <sup>20</sup>	Quantitative	Rev Latino-Am Enfermagem
MEDLINE	Intimate Partner Violence Outcomes in Women with PTSD and Substance Use: A Secondary Analysis of NIDA Clinical Trials Network "Women and Trauma" Multi-Site Study	Cohen <i>et al.</i> (2013) <sup>21</sup>	Quantitative	Addict Behav
MEDLINE	Mediators of the Relation Between Partner Violence and Sexual Risk Behavior Among Women Attending a Sexually Transmitted Disease Clinic	Mittal; Senn; Carey (2011) <sup>22</sup>	Quantitative	Sex Transm Dis.

Origin	Title	Authors/ Year	Design	Periodic
MEDLINE	Partner Aggression Among Men and Women in Substance Use Disorder Treatment: Correlates of Psychological and Physical Aggression and Injury	Chermack <i>et al.</i> (2008) <sup>23</sup>	Quantitative	Drug Alcohol Depend
MEDLINE	Risk factors for injury to women from domestic violence	Demetrios <i>et al.</i> (1999) <sup>24</sup>	Quantitative	The New England Journal of Medicine
MEDLINE	The impact of substance use, sexual trauma and intimate partner violence on sexual risk intervention outcomes in couples: A randomized trial	Jones <i>et al.</i> (2013) <sup>25</sup>	Quantitative	Ann Behav Med
MEDLINE	Violence Among Men and Women in Substance Use Disorder Treatment: A Multi-level Event-based Analysis	Chermack <i>et al.</i> (2010) <sup>26</sup>	Quantitative	Drug Alcohol Depend
MEDLINE	Women's awareness of and discomfort with sexual assault cues: effects of alcohol consumption and relationship type	Davis <i>et al.</i> (2009) <sup>27</sup>	Quantitative	Violence Against Women
CINAHL	Violence against women, family cohesion and drugs	Rabello; Caldas Júnior (2007) <sup>28</sup>	Quantitative	Rev Saúde Pública
CINAHL	Experience and impact of domestic violence: female speech	Gomes <i>et al.</i> (2012) <sup>29</sup>	Qualitative	Rev. enferm. UERJ
CINAHL	Chemical dependency as a risk factor for domestic violence against women	Trigueiro; Labronici (2011) <sup>30</sup>	Qualitative	Online Brazilian Journal of Nursing

### Risk factors associated with violence against women and its interface with the use of psychoactive substances

According to the perception of health professionals, the factors that influence the various situations of domestic violence have as causes: economic conditions, alcoholism and family history of violence. Sexism was described as a phenomenon in which men believe that women have a duty to serve and always be available; financial difficulties as a potential source of situations of violence; alcoholism was



highlighted as a factor that predisposes to violence against women; and people who have experienced domestic violence in childhood tend to reproduce the violent behavior.<sup>16</sup>

In another study, the results obtained suggest several distal and proximal factors that may be associated with aggression suffered by women in the relationships with their partners, among such factors were mentioned: family history, the alcoholism, drug use and depression, once the symptoms of depression are associated with physical and psychological abuse by partners.<sup>23</sup>

In this sense, scholars report that the reasons and situational factors that lead to violence against women involve financial issues and jealousy, where the latter one tends to be the crucial point for the beginning of the violence - associated with alcohol consumption and drugs by the aggressor.<sup>19</sup>

Regarding the profile of the victims, most women who have experienced violence were young, embedded in family contexts where there was drug abuse. Also, the partner and ex-partner were the most cited as perpetrators. Alcohol appears to be the most harmful drug to family functioning, mainly because it is socially acceptable, being consumed on a large scale by men.<sup>28</sup>

Another study showed that female victims of domestic violence were abused by their partners, and the episodes of violence occurred mainly when the partner was under the influence of alcohol. However, the crack was also mentioned as a drug of daily used by the partner - being associated with domestic violence.<sup>30</sup>

In this context, it appears that the factors associated with domestic violence include alcohol abuse, drug use and recent unemployment. Regarding the partner's ethnic group, it was not verified association with the risk of domestic violence. Among the 256 women participating in the study, 63.7% had partners who had alcohol abuse and 36.3% had partners who used drugs. On the use of alcohol 51.6% confirmed that the companion made use of alcohol before the attack and 14.8% said that the companion used drugs before the attack.<sup>24</sup>

A study with users of multiple psychoactive substances in therapeutic process showed that the use of alcohol and cocaine are considered factors associated with violence in a expressive portion of the marital relationships between men and women.<sup>26</sup>

With an emphasis on alcohol, a study showed that the effects of the drug and its relations with risk of sexual assault on women were identified by the signs of cognitive impairment related to alcohol. The women who drank a lower proportion of alcohol reported full awareness of sexual violence risk signals. The proportion of women who drank higher amounts of alcohol reported total ignorance about the risk of sexual violence. This confirms that alcohol impairs cognitive perception in intoxicated women, increasing the risk of sexual violence.<sup>27</sup>

Regarding the combination of the situations of violence against women and the influence of sociodemographic

characteristics (age, ethnicity, marital status, education level and employment), a study with 288 participants found no significant difference in violence committed by an intimate partner in relation to who did not report violence. Although, when related to participants living with a mate who makes use of alcohol, it was significant the possibility of risk regarding intimate partner violence. For the risk factors associated with living with a partner that makes use of alcohol, the odds of reporting violence by the partner were three times higher.<sup>21</sup>

In this context, related to living together with the partner, who makes use of any substance, other study showed high rates of violence from the partner - with 18% of women reporting violence by the partner in the last month, and about 57% of women who have suffered violence committed by the intimate partner in life had physical or psychological abuse - as well as a large number of depressive symptoms reported. Violence by the partner was associated with drug use before intercourse, but depressive symptoms and drug use were not related to risky sexual behavior.<sup>22</sup>

### **Violence against women and its multiple faces**

The physical violence against women is the easiest to be verified, mainly by body marks that favor the injuries visibility. However, it is not only physical violence that can leave marks in the medium and long term. Psychological violence also brings deep marks regarding negative impacts towards women, reflecting on their physical and mental health. The experience of violence experienced by women causes physical and mental harm, interfering in her intellectual human development.<sup>29</sup>

It was also found that a large proportion of women had an average age of 30 years, with low education, and most of them were married or living with a partner. Considering their context of life, some said they could not rely on family support in any time, even on the case of a possible violence suffered.<sup>17</sup>

In this context, the form of violence that presented the highest level was psychological violence throughout life - in the last year insults prevailed. In relation to physical violence, it was considerable the moderate values throughout life and in the last year, like pushing. The incidence of punches and throwing objects are related to acts classified as serious violence. It was also found the presence of sexual violence, once women had to do sex against their will - especially for fear of the partner.<sup>17</sup>

The most frequent types of violence against women were the psychological, physical, and psychological accompanied by physical, being the psychological the most serious. The study results showed a high prevalence of partner violence - with women exposed to violence by their partner - and the most identified violence in the study was psychological, exceeding three times the physical violence and twice the sexual violence. So it is important to understand that the violence suffered by women is a problem of great importance to public health.<sup>15</sup>

Another study found a low rate of physical violence suffered by participants, which is due to the fact that most participants interviewed during the survey were single. However, regarding the use of alcohol, a large consumption was verified in both the interviewed and their partners during social gatherings. Although not confirming cases of explicit violence, the occurrence of psychological violence was explicit.<sup>18</sup>

Significant differences were observed regarding the occurrence of physical violence in Brazil, Mexico and Peru, being higher in Mexico, followed by Peru and finally Brazil. However, sexual harassment did not show significant differences among such countries - having a lower level in the three countries.<sup>20</sup>

Thus, couples who have sexual trauma history are likely to suffer violence by their partners, and the risk of violence being committed by the intimate partner reveals the need for actions aimed at reducing the risk of violence - action focused in protecting women who have any sexual trauma history.<sup>25</sup>

## CONCLUSION

The analysis of the reviewed studies identified that violence against women can be physical, psychological and sexual, being that its occurrence can cause a number of complications in the physical and mental health - interfering with the intellectual development of women. Also, it showed that psychological violence is the one that most affects women, and may be accompanied by physical and sexual violence.

It can be seen, with this study, that several risk factors are associated with violence against women and the use of substances - and the major responsible for violence is the companion or partner. Among the highlighted factors are the family history, alcohol abuse, use of illegal drugs, depression and jealousy. Regarding chemical dependency associated with violence, it can be said that the use of substances was found in the reviewed studies and such use by the partner increases up to three times the risk of violence against women - since most of the violence suffered by women is related to the use of psychoactive substances.

It is important to note that the information obtained about the relations between substance abuse and violence in the female population is essential for nursing, once this professional support decisions, establish strategies and actions planning the solution of incoming situations.

The findings of this study point out several gaps that should be investigated, and also the need for achievement and publication of other researches - because of the lack of current studies about the link between substance abuse and violence in the female universe.

## ACKNOWLEDGEMENTS

The authors would like to thank the National Council for Scientific and Technological Development (CNPq) for funding the research entitled "Violence, alcohol and drugs in the female population: prevalence, risk factors and consequences of mental health", from which this article derives.

## REFERENCES

1. CDidonet ACH, Fontana RT. O trabalho com dependentes químicos: satisfações e insatisfações [Internet]. *Rev Rene*. 2011 Jan-Mar (12):1 [cited 2014 Nov 20]. Available at: <http://www.revistarene.ufc.br/revista/index.php/revista/article/view/107>
2. Rocha FM, Vargas D de, Oliveira MAF, Bittencourt MN. Caring for people with psychoactive substance dependence: nursing student perceptions. *Rev Esc Enferm USP* [Internet]. [cited 2014 Nov 20];47(3):671-7. Available at: [http://www.scielo.br/scielo.php?script=sci\\_arttext&pid=S0080-62342013000300671](http://www.scielo.br/scielo.php?script=sci_arttext&pid=S0080-62342013000300671)
3. Rocha JCG, Rocha Junior A. Aspectos de personalidade observados em uma amostra de indivíduos usuários de drogas por meio do teste Wartegg. *Rev Saúde Publica* 2010;4 (2):10-22.
4. Capistrano FC, Ferreira ACZ, Maftum MA, Kalinke LP, Mantovani M de F. Impacto social del uso abusivo de drogas para dependientes químicos registrados en prontuarios. *Cogitare enferm* [Internet]. 2013 [cited 2014 Nov 20];18(3):468-74. Available at: [http://www.revenf.bvs.br/scielo.php?script=sci\\_arttext&pid=S1414-85362013000300007](http://www.revenf.bvs.br/scielo.php?script=sci_arttext&pid=S1414-85362013000300007)
5. Marangoni SR, Oliveira MLF. Fatores desencadeantes do uso de drogas de abuso em mulheres. *Texto Context - Enferm* [Internet]; 2013 Sep [cited 2014 Nov 20];22(3):662-70. Available at: [http://www.scielo.br/scielo.php?script=sci\\_arttext&pid=S0104-07072013000300012&lng=en&nrm=iso&tlng=pt](http://www.scielo.br/scielo.php?script=sci_arttext&pid=S0104-07072013000300012&lng=en&nrm=iso&tlng=pt)
6. Bittar DB, Nakano AMS. Domestic violence: life history analysis of aggressive mothers users of alcohol and drugs in the context of their original families. *Texto Context Enferm* [Internet]. 2011 [cited 2014 Nov 20];20(1):17-24. Available at: [http://www.scielo.br/scielo.php?script=sci\\_arttext&pid=S0104-07072011000100002&lng=en&nrm=iso&tlng=pt](http://www.scielo.br/scielo.php?script=sci_arttext&pid=S0104-07072011000100002&lng=en&nrm=iso&tlng=pt)
7. Acosta DF, Gomes VLO, Barlem ELD. Perfil das ocorrências policiais de violência contra a mulher. *Acta paul enferm* [Internet]. 2013 [cited 2014 Nov 20];26(6):547-53. Available at: [http://www.scielo.br/scielo.php?script=sci\\_arttext&pid=S0103-21002013000600007&lng=en&nrm=iso&tlng=pt](http://www.scielo.br/scielo.php?script=sci_arttext&pid=S0103-21002013000600007&lng=en&nrm=iso&tlng=pt)
8. Guedes RN, Fonseca RMGS. A autonomia como necessidade estruturante para o enfrentamento da violência de gênero. *Rev da Esc Enferm da USP* [Internet]. 2011 Dec [cited 2014 Nov 20];45(spe2):1731-5. Available at: <http://www.revistas.usp.br/reuesp/article/view/40896>
9. Fonseca RMGS da, Leal AERB, Skubs T, Guedes RN, Egry EY. Domestic violence against women from the perspective of the community health agent. *Rev Lat Am Enfermagem* [Internet]; 2009 Dec [cited 2014 Nov 20];17(6):974-80. Available at: [http://www.scielo.br/scielo.php?script=sci\\_arttext&pid=S0104-11692009000600008&lng=en&nrm=iso&tlng=en](http://www.scielo.br/scielo.php?script=sci_arttext&pid=S0104-11692009000600008&lng=en&nrm=iso&tlng=en)
10. Hesler LZ, Costa MC da, Resta DG, Colomé ICS. Violência contra as mulheres na perspectiva dos agentes comunitários de saúde. *Rev Gaúcha Enferm* [Internet]; 2013 Mar [cited 2014 Nov 20];34(1):180-6. Available at: [http://www.scielo.br/scielo.php?script=sci\\_arttext&pid=S1983-14472013000100023&lng=en&nrm=iso&tlng=pt](http://www.scielo.br/scielo.php?script=sci_arttext&pid=S1983-14472013000100023&lng=en&nrm=iso&tlng=pt)
11. Souza MRR de, Oliveira JF de, Nascimento ER do. A saúde de mulheres e o fenômeno das drogas em revistas brasileiras. *Texto Context Enferm* [Internet]; 2014 [cited 2014 Nov 20];23(1):92-100. Available at: <http://www.redalyc.org/resumen.oa?id=71430666011>
12. Mendes KDS, Silveira RCCP; GALVÃO CM. Revisão integrativa: método de pesquisa para a incorporação de evidências na saúde e na enfermagem. *Texto Contexto Enferm* 2008;17(4):758-64.
13. Pompeo DA, Rossi LA, Galvão CM. Integrative literature review: the initial step in the validation process of nursing diagnoses. *Acta paul enferm* [Internet]. 2009 [cited 2014 Nov 20];22(4):434-8. Available



- at: [http://www.scielo.br/scielo.php?script=sci\\_arttext&pid=S0103-21002009000400014&lng=en&nrm=iso&tlng=en](http://www.scielo.br/scielo.php?script=sci_arttext&pid=S0103-21002009000400014&lng=en&nrm=iso&tlng=en)
14. Ursi EA. Prevenção de lesões de pele no perioperatório: revisão integrativa da literatura. *Rev Lat Am Enfermagem* 2006; 14(1):124-31.
  15. Marcacine KO, Abuchaim ESV, Abrahão AR, Michelone CSL, Abrão ACFV. Prevalência de violência por parceiro íntimo relatada por puérperas. *Acta paul. enferm* 2013;26(4):395-400.
  16. Moreira SNT, Galvão LLLF, Melo COM, Azevedo GD. Violência física contra a mulher na perspectiva de profissionais de saúde. *Rev Saude Publica* [Internet]. 2008 Dec [cited 2014 Nov 20];42(6):1053-9. Available at: <http://www.revistas.usp.br/rsp/article/view/32551>
  17. Moura LBA, Gandolfi L, Vasconcelos AMN, Pratesi R. Violências contra mulheres por parceiro íntimo em área urbana economicamente vulnerável, Brasília, DF. *Rev Saude Publica* [Internet]. 2009 Dec [cited 2014 Nov 20];43(6):944-53. Available at: <http://www.revistas.usp.br/rsp/article/view/32719>
  18. Paredes JMH, Ventura CAA. Alcohol consumption and domestic violence against women: a study with university students from Mexico. *Rev latinoam enferm* [Internet]. 2010 [cited 2014 Nov 20];18(spe):557-64. Available at: [http://www.scielo.br/scielo.php?script=sci\\_arttext&pid=S0104-11692010000700011](http://www.scielo.br/scielo.php?script=sci_arttext&pid=S0104-11692010000700011)
  19. Bonifaz RG V, Nakano AMS. La violencia intrafamiliar, el uso de drogas en la pareja, desde la perspectiva de la mujer maltratada. *Rev latinoam enferm* [Internet]. 2004 [cited 2014 Nov 20];12(n. esp):433-8. Available at: <http://bases.bireme.br/cgi-bin/wxislind.exe/iah/online/?IsisScript=iah/iah.xis&src=google&base=LILACS&lang=p&nextAction=lnk&exprSearch=361171&indexSearch=ID>
  20. Castillo MMA, Oblitas FYM, David HMSL, Meza MVG. Consumo de drogas e violencia laboral em mulheres que trabalham, um estudo multicêntrico: México, Peru, Brasil [Internet]. *Revista Latino-Americana de Enfermagem*. 2006 [cited 2014 Nov 20]. p. 155-62. Available at: <http://www.scificircle.com/pt/22361/consumo-drogas-violencia-laboral-mulheres-trabalham-estudo>
  21. Cohen LR, Field C, Campbell ANC, Hien DA. Intimate partner violence outcomes in women with PTSD and substance use: a secondary analysis of NIDA Clinical Trials Network “Women and Trauma” Multi-site Study. *Addict Behav* [Internet]. 2013 Jul [cited 2014 Nov 12];38(7):2325-32. Available at: <http://www.sciencedirect.com/science/article/pii/S0306460313000786>
  22. Mittal M, Senn TE, Carey MP. Mediators of the relation between partner violence and sexual risk behavior among women attending a sexually transmitted disease clinic. *Sex Transm Dis* [Internet]. 2011 Jun [cited 2014 Nov 20];38(6):510-5. Available at: <http://www.pubmedcentral.nih.gov/articlerender.fcgi?artid=3106110&tool=pmcentrez&rendertype=abstract>
  23. Chermack ST, Murray RL, Walton MA, Booth BA, Wryobeck J, Blow FC. Partner aggression among men and women in substance use disorder treatment: correlates of psychological and physical aggression and injury. *Drug Alcohol Depend* [Internet]. 2008 Nov 1 [cited 2014 Nov 20];98(1-2):35-44. Available at: <http://www.sciencedirect.com/science/article/pii/S0376871608001646>
  24. Jones DL, Kashy D, Villar-Loubet OM, Cook R, Weiss SM. The impact of substance use, sexual trauma, and intimate partner violence on sexual risk intervention outcomes in couples: a randomized trial. *Ann Behav Med* [Internet]. 2013 Jun [cited 2014 Nov 20];45(3):318-28. Available at: <http://www.pubmedcentral.nih.gov/articlerender.fcgi?artid=3644024&tool=pmcentrez&rendertype=abstract>
  25. Chermack ST, Grogan-Kaylor A, Perron BE, Murray RL, De Chavez P, Walton MA. Violence among men and women in substance use disorder treatment: a multi-level event-based analysis. *Drug Alcohol Depend* [Internet]. 2010 Dec [cited 2014 Nov 20];112(3):194-200. Available at: <http://www.sciencedirect.com/science/article/pii/S0376871610002115>
  26. Kyriacou DN, Anglin D, Taliaferro E, Stone S, Tubb T, Linden JA, et al. Risk factors for injury to women from domestic violence against women. *N Engl J Med* [Internet]. 1999 Dec [cited 2014 Nov 20];341(25):1892-8. Available at: <http://www.ncbi.nlm.nih.gov/pubmed/10601509>
  27. Davis KC, Stoner SA, Norris J, George WH, Masters NT. Women’s awareness of and discomfort with sexual assault cues: effects of alcohol consumption and relationship type. *Violence Against Women* [Internet]. 2009 Sep [cited 2014 Nov 20];15(9):1106-25. Available at: <http://yaw.sagepub.com/content/15/9/1106.short>
  28. Rabello PM, Caldas Júnior A de F. Violence against women, family cohesion and drugs. *Rev saúde pública* [Internet]. 2007 [cited 2014 Nov 20];41(6):970-8. Available at: [http://www.scielo.org/scielo.php?script=sci\\_arttext&pid=S0034-89102007000600012&lng=pt&nrm=iso&tlng=en](http://www.scielo.org/scielo.php?script=sci_arttext&pid=S0034-89102007000600012&lng=pt&nrm=iso&tlng=en)
  29. Gomes NP, Diniz NMF, Gesteira SM do A, Paixão GP do N, Couto TM. Experiencia y repercusiones de la violencia conyugal: el discurso femenino. *Rev enferm UERJ* [Internet]. 2012 [cited 2014 Nov 20];20(1,n.esp):585-90. Available at: <http://bases.bireme.br/cgi-bin/wxislind.exe/iah/online/?IsisScript=iah/iah>

Received on: 26/11/2014

Required for review: No

Approved on: 18/01/2016

Published on: 15/07/2016

**Contact of the corresponding author:**

Fernando José Guedes da Silva Júnior  
BR 343, km 3,5 - Bairro Meladão - Floriano/PI  
ZIP code: 64800-000