

Integrating Health Into the Urban Master Plan of Vic, Barcelona: A Comprehensive Approach

Puig-Ribera, Anna; Rofin, Marta; Bort-Roig, Judit; Aumatell, Eva; Juncà, Albert; de San Pedro, Marc; Garcia-Cuyàs, Francesc; Chamorro, Cati; Perona-Ribes, Lorena; Torrentó, Josep Ramon; Jabardo-Camprubí, Guillem; Palmero, Fabiana; Geli, Marina

Veröffentlichungsversion / Published Version

Zeitschriftenartikel / journal article

Empfohlene Zitierung / Suggested Citation:

Puig-Ribera, A., Rofin, M., Bort-Roig, J., Aumatell, E., Juncà, A., de San Pedro, M., ... Geli, M. (2022). Integrating Health Into the Urban Master Plan of Vic, Barcelona: A Comprehensive Approach. *Urban Planning*, 7(4), 25-41. <https://doi.org/10.17645/up.v7i4.5492>

Nutzungsbedingungen:

Dieser Text wird unter einer CC BY Lizenz (Namensnennung) zur Verfügung gestellt. Nähere Auskünfte zu den CC-Lizenzen finden Sie hier: <https://creativecommons.org/licenses/by/4.0/deed.de>

Terms of use:

This document is made available under a CC BY Licence (Attribution). For more information see: <https://creativecommons.org/licenses/by/4.0>

Article

Integrating Health Into the Urban Master Plan of Vic, Barcelona: A Comprehensive Approach

Anna Puig-Ribera ^{1,*}, Marta Rofin ², Judit Bort-Roig ¹, Eva Aumatell ³, Albert Juncà ¹, Marc de San Pedro ¹, Francesc Garcia-Cuyàs ¹, Cati Chamorro ⁴, Lorena Perona-Ribes ⁵, Josep Ramon Torrentó ⁴, Guillem Jabardo-Camprubí ¹, Fabiana Palmero ², and Marina Geli ¹

¹ Centre for Health and Social Care, University of Vic-Central University of Catalonia, Spain

² Vic City Council, Spain

³ eHealth Centre, Open University of Catalonia, Spain

⁴ Public Health Department, Barcelona Provincial Council, Spain

⁵ Urbanism Department, Barcelona Provincial Country, Spain

* Corresponding author (annam.puig@uvic.cat)

Submitted: 4 March 2022 | Accepted: 20 July 2022 | Published: 27 October 2022

Abstract

Planning healthier cities is essential for public health. However, there is a gap between the insights from public health research and applications to planning practice. Based on a scoping review and in cooperation with urban planners and public health professionals, this study developed evidence-based tools and a comprehensive approach to help urban planners integrate health into the urban master plan (2017–2020) of a medium-sized city named Vic (Barcelona). The scoping review included a systematic review of the literature (PubMed, PRISMA protocol) and an advanced Google search for gray literature (2015–2017). The systematic review identified significant associations between urban planning attributes ($n = 16$) and health outcomes ($n = 21$). After critical appraisal with stakeholders, an urban and health association matrix was developed to help urban planners understand the connection between urban planning and health. The advanced Google search identified urban planning actions ($n = 117$) that had an impact on health outcomes. After critical appraisal with stakeholders, a healthy urban planning actions checklist ($n = 68$) was developed to help urban planners' decision-making on the inclusion of locally tailored health-enhancing urban planning actions into the urban master plan. From the reviewed evidence and tools, a comprehensive approach delineated a series of steps that successfully led urban planners to incorporate health-enhancing urban actions ($n = 112$) into the urban master plan. This translational research developed a comprehensive approach to include health in local urban planning. This might scale up to other European medium-sized cities to maximise the effectiveness of built environment interventions and monitor their health impact.

Keywords

Barcelona; health in the city; medium-sized city; tools; urban master plan; urban planning

Issue

This article is part of the issue “Healthy Cities: Effective Urban Planning Approaches to a Changing World” edited by Elmira Jamei (Victoria University), Simona Azzali (Prince Sultan University), Hendrik Tieben (The Chinese University of Hong Kong), and K Thirumaran (James Cook University, Singapore).

© 2022 by the author(s); licensee Cogitatio (Lisbon, Portugal). This article is licensed under a Creative Commons Attribution 4.0 International License (CC BY).

1. Introduction

Urban settings are key social determinants of health (Cockerham et al., 2017). Traffic exposure, noise, air pollution, social isolation, physical inactivity, sedentary

behaviour, unhealthy diets, and crime (Giles-Corti et al., 2016; Glazener & Khreis, 2019; Sallis et al., 2016) are all city-related health hazards that have a causal role in fostering chronic disease (Giles-Corti et al., 2016; Kleinert & Horton, 2016). Given that the global urban population

is expected to double by 2050 (United Nations, 2016), cities have a central role in improving populations' health (United Nations, 2015, 2016).

Tackling the way cities are planned is to fundamentally promote urban health (Giles-Corti et al., 2016; Nieuwenhuijsen, 2020). Poor urban designs are associated with an increased risk of chronic disease and premature mortality burden (Khomenko et al., 2020) and are environmental stressors for the severity of Covid-19 (Barouki et al., 2021). Thus, improving the built environment of communities, creating walkable environments, or increasing exposure to urban green and blue spaces are current priorities for public health (Frank et al., 2019; Frank & Wali, 2021; Higgs et al., 2019; Koehler et al., 2018; Smith et al., 2021).

Several reviews have identified interventions, policies, or actions that make cities healthier (Nieuwenhuijsen, 2018, 2020; Salgado et al., 2020; Wolf et al., 2020). However, designing health-enhancing urban environments is a complex task that demands systems-based and interdisciplinary methods (Goenka & Andersen, 2016; Vardoulakis et al., 2016). In a context where translational research in urban health studies is scarce (Rubio et al., 2010), there is a current need to systematically and practically approach the design of healthier cities (Sallis et al., 2016). Thus, enhancing the adoption of best practices by using multidisciplinary and collaborative approaches with key stakeholders in real-life practice settings (Rubio et al., 2010) is a key issue to bridge research-practice gaps in healthy urban planning.

Effective environmental decision-making is required to guide the design of new neighbourhoods or the redevelopment of existing built environments to become health-enhancing (Frank et al., 2019; Koehler et al., 2018). This is especially relevant at the earliest stages of city (re)development when urban planners draw urban master plans, defined as the technical long-term city planning instrument that indicates the main city layout to guide future land use growth, development, and preservation. Urban planners have a fundamental role in designing healthier cities and with public health evolving from a bio-medical to a socio-anthropological approach (Azzopardi-Muscat et al., 2020), there is a scarcity of decision support tools and comprehensive approaches to help urban planners effectively integrate health-enhancing services and infrastructures into local urban master plans.

Some decision support tools for policy and investment decisions exist in green infrastructure (van Oijstaeijen et al., 2020), urban transport planning such as the health impact assessments (Nieuwenhuijsen et al., 2017; Ramirez-Rubio et al., 2019) or the overall urban built environment (Pineo et al., 2020). However, these have been developed for large urban and metropolitan areas rather than for small- to medium-sized cities (5,000–100,000 inhabitants) that characterise most European settlements (Servillo et al., 2017). Examples include the national public health assessment model

(N-PHAM) in America and Canada (Schoner et al., 2018), the US Environmental Protection Agency's Eco-Health Relationship Browser (<http://epa.gov/enviroatlas>), the Australian Urban Observatory (<https://auo.org.au>), which also includes some medium-sized towns and cities in Australia, the Pedestrian First tools for a walkable city (<https://pedestriansfirst.itdp.org>), and the resources developed by the US American Planning Association on how to incorporate health into planning (<https://cpe.rutgers.edu/public-health/health-in-all-policies>). In a context where (a) little systematic research exists on small- and medium-sized cities compared to large cities and (b) few tools exist to match the different implementation phases of the design of urban master plans, there is a current need to "scale up" (Milat et al., 2015) real-life practices of small- and medium-sized cities that integrate health-enhancing urban actions into local urban master plans.

Given the current research-practice gaps, our study aimed to develop evidence-based tools and a comprehensive approach—in cooperation with public health professionals and urban planners—to guide urban planner's practice on integrating health into the urban master plan (2017–2020) of Vic, a medium-sized city with 45,000 inhabitants near Barcelona (Spain). This research practice study can contribute to maximising the effectiveness of health-enhancing urban environments in small- and medium-sized cities and monitoring their health impact.

2. Materials and Methods

A scoping review (Arksey & O'Malley, 2005) of two phases was performed throughout the development of the urban master plan of Vic. First, a systematic review of scientific evidence aimed to examine the relationships between urban planning attributes and health outcomes. Second, an advanced Google search of gray literature aimed to identify real-life local urban planning actions that influenced such health outcomes. Gray literature usually contains information that is not available in academic or scientific documents (Paez, 2017), a key issue to identify health-enhancing urban practices grounded in the "real world."

The reviewed evidence was then cooperatively shared and critically appraised with key stakeholders (urban planners and public health professionals) involved in the urban master plan of Vic. According to Milat et al. (2015), both a systematic use of the reviewed evidence and sharing the evidence with key stakeholders are fundamental issues when putting research into practice. Based on participatory action research, which embraces principles of participation, reflection, empowerment, and emancipation of people and groups interested in improving their social situation, an expert steering group was built to allow stakeholders and researchers become contributing actors in the research enterprise (Berg, 2004). The steering group ($n = 9$), led by two researchers from the University of Vic, included urban

planners from the Vic City Council (n = 1) and the supra-municipal entity Barcelona Provincial Council (n = 2), as well as public health professionals from the Barcelona Provincial Council (n = 2) and the Faculty of Medicine at the University of Vic (n = 2). In this group, researchers shared their knowledge of the reviewed evidence and discussed with stakeholders how the evidence could be made usable for urban planners to develop the Vic urban master plan. This participatory approach has been described elsewhere (Juncà et al., 2019).

2.1. Systematic Review of the Literature

2.1.1. Search Strategy and Selection Criteria

Following the PRISMA protocol for systematic reviews (<http://www.prisma-statement.org>), relevant scientific articles in the database PubMed were searched from January 2015 to 31 December 2017. Search terms described two key search areas: (a) urban planning and environment and (b) health and health-related concepts. The search strategy is described in Supplementary File 1.

Scientific articles were included if studies quantitatively investigated the associations between attributes of urban planning and health behaviours and outcomes. One author selected the scientific articles by examining titles and abstracts and excluded those focused on (a) private or indoor built environments, (b) natural or agricultural settings, and (c) specific clinical populations. Full-text data of eligible records were critically appraised before inclusion in the comprehensive synthesis of relevant literature. Any disagreement about document eligibility was resolved by other authors. Manual searching of reference lists also identified additional relevant studies and systematic reviews.

2.1.2. Data Extraction and Theoretical Integration of the Literature

Data from scientific studies were extracted according to the PRISMA 2009 checklist (Moher et al., 2009): details on source (authors, year, and location, i.e., country or city); objectives; study design (description of participants, interventions, comparisons, outcomes, and design); urban planning attributes and measurement methods; health outcomes and measurement methods; and synthesis of the existing associations between urban planning attributes and health outcomes.

Data on health-related urban planning attributes were categorised into five groups: traffic, density, land use mix, connectivity, and landscape (Nieuwenhuijsen, 2020; Salgado et al., 2020). Data on health outcomes were categorised into physical (physical and behavioural), social (psychological, emotional and social), environmental, and global health risk factors according to the WHO health indicators description of what makes cities healthy (WHO Regional Office for Europe, 2009).

2.1.3. Summary and Report of Key Findings

A comprehensive analysis of the reviewed evidence identified urban planning attributes related to health outcomes. After critical appraisal with key stakeholders, a Matrix table that visually summarised statistically significant relationships between urban planning attributes and health outcomes was developed. The matrix helped public health professionals and urban planners understand the connection between urban planning and health.

2.2. Advanced Google Search

2.2.1. Search Strategy and Selection Criteria

A gray literature search of documents of governmental organisations and public agencies in the advanced search platform of Google was performed. The search randomly permuted a combination of key terms in the following areas: document; urban planning; environment; health and health-related concepts; internet domains; search operators; and specific symbols that acted as filters following the Google search criteria (the Google search strategy is described in Supplementary File 2).

The authors reviewed Google records by titles and nomenclature links shown as relevant in the Google algorithm. Only the first 100 records were cross-checked since relevant records tend to appear in the first 10 pages according to the Google search criteria. Exclusion criteria of documents included scientific papers, documents from non-public profit organisations, individual authors, and documents with the internet domain “.com,” which usually belongs to private companies. Inclusion criteria of documents included the full text of eligible records for national and international documents that illustrated urban planning actions within the health-related urban planning attributes that were analysed. Relevant documents were downloaded in PDF and included in the final comprehensive synthesis. Any disagreement about document eligibility was resolved by other authors.

2.2.2. Data Extraction and Theoretical Integration of the Literature

The following data were systematically extracted from the selected PDF documents: (a) author and year of publication; (b) general and specific aims; (c) description of the health-enhancing urban planning actions; and (d) measurement and evaluation methods for the urban actions if any.

2.2.3. Summary and Report of Key Findings

Data extracted from the reviewed evidence identified urban planning practices that fitted within each health-related urban planning attribute that was identified in the systematic review (traffic, density, land use mix, connectivity, and landscape). Results were critically

appraised by urban planners to discuss health-focused planning practices that could be better incorporated into Urban Master Plans of medium-sized cities. A checklist of health-focused urban planning practices was created to help urban planners include urban actions tailored to the local health characteristics and needs.

2.3. Comprehensive and Participatory Approach With Stakeholders

A first meeting with the expert steering group discussed and reached agreements on how to apply the evidence from the systematic review of the literature into practice. Initially, researchers presented a report on the urban planning attributes related to health indicators. Then, results were shared among stakeholders who highlighted the need to develop a matrix to make the connection between urban planning and health easier to understand. Stakeholders' feedback was collected to determine the exact features of the matrix. After the first meeting, a matrix was developed by researchers who sent a first draft to stakeholders by email. Minor changes were suggested, for example, adding colours to each group of health-related urban planning attributes for better understanding.

In a second meeting, the discussion reached agreements on how to apply evidence from the advanced Google search into practice. Initially, researchers presented the long list of health-focused urban actions that had been identified in the Google search. Then, urban planners provided feedback on the health-focused urban actions they perceived to be more feasible to be implemented within small-to-medium sized cities. An agreement was reached about including the perceived most feasible health-focused urban actions in a checklist as an

easy way to guide urban planners' decisions on how to integrate health services and infrastructures into the city urban master plan.

A third meeting agreed on how to develop and apply a comprehensive approach that was perceived as useful for stakeholders to integrate health into the city's urban master plan. Initially, urban planners presented a general plan on how they were intending to apply the matrix and checklist to include health-focused urban planning actions in the local urban master plan. The general plan was agreed upon by stakeholders and was decided to be applied in real life. After implementation, minor changes were suggested to make implementation easier, for example, using the checklist of urban planning actions first rather than the matrix. This allowed urban planners to count the number of actions included in the urban master plan that related to each urban planning attribute and health outcome.

3. Results

The systematic review of scientific literature generated 623 scientific studies that were screened by abstract. After excluding those studies that did not quantitatively investigate the associations between attributes of urban planning, health behaviours and outcomes the full text of 169 studies was critically appraised for final eligibility. Eighty-five studies failed to meet the inclusion criteria, and 84 studies were included in the comprehensive synthesis (see Figure 1). The Google search strategy yielded more than three thousand records. From the first 100 records, eighty potentially relevant documents were identified, 62 of which met the exclusion criteria. A total of 18 documents were included for analysis (see Figure 2).

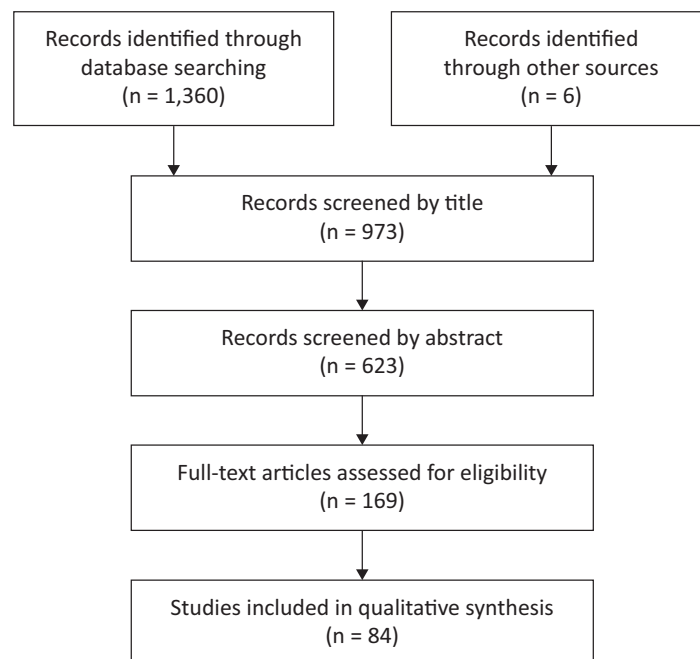


Figure 1. Flowchart diagram of the systematic review.

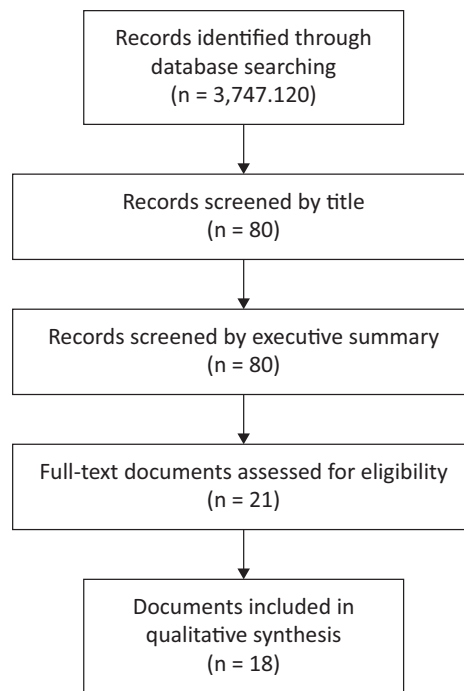


Figure 2. Flowchart diagram of the Google search.

3.1. Results From the Systematic Review

The studies were cross-sectional, systematic reviews and quantified the relationship between objective or perceived urban planning attributes and health outcomes. They were carried out in the US ($n = 24$), Canada ($n = 12$), followed by Europe (Spain, Germany, Finland, Norway, and Italy, $n = 11$), Asia (China and Japan, $n = 7$), Oceania (Australia and New Zealand, $n = 5$), Central and South America (Peru, Mexico, and Argentina, $n = 3$), South Africa ($n = 1$), and 21 studies were multinational including at least two different countries. The reference list is shown in Supplementary File 3.

A total of 16 urban planning attributes (see Figure 3) were significantly associated with 21 health outcomes (see Figure 4). Residential density, street connectivity, land use mix, walking and cycling infrastructures, open public spaces (i.e., green areas), aesthetic attributes, crime, traffic safety, and walkability were related to the widest range of health outcomes, especially physical activity and weight control. Significant associations between urban planning attributes and health outcomes are shown in Supplementary File 4. After critical appraisal with urban planners and public health professionals, an urban and health association matrix (UHAM) was designed to help urban planners and public health professionals understand the relationship between urban planning and health (see Figure 5).

3.2. Results From the Advanced Google Search

The selected documents ($n = 18$) were published by governmental organisations from Australia ($n = 2$), Canada

($n = 2$), the US ($n = 1$), Europe ($n = 2$), Hong Kong ($n = 1$), the UK ($n = 4$), Sweden ($n = 1$), and global public agencies ($n = 5$) such as the World Health Organization and Interreg Europe. They were descriptive documents that formed the basis of territorial projects and urban planning strategies that were either already developed or were future planned. The reference list is shown in Supplementary File 5.

A total of 117 urban actions fitted within the five groups of health-related urban planning attributes previously identified. Density grouped actions to promote compact cities and proximity commerce (6.84%, $n = 17$). Land use mix grouped actions referring to the diversity of the built-environment uses for everyone (25.90%, $n = 55$). Connectivity grouped actions related to urban network connectivity and pedestrian and cycling pathway designs (40.17%, $n = 52$). Traffic included actions related to reducing traffic volume and speed, as well as increasing road safety (23.83%, $n = 28$). Landscape included actions on how to improve cities' aesthetics and the greenery of public open spaces and natural areas (73.50%, $n = 88$). The complete list of health-enhancing urban actions is shown in Supplementary File 6.

After critical appraisal with urban planners and public health professionals, a healthy urban planning actions checklist (HUPAC) was developed to better suit small to medium-sized cities. This HUPAC was created as a menu of choices for healthy urban practices to help urban planners decide on health-focused urban planning actions that could be included in the urban master plan of the city. The HUPAC (see Table 1) consisted of 68 urban actions on density ($n = 7$), land use mix ($n = 3$), connectivity ($n = 26$), traffic ($n = 4$), and landscape ($n = 28$).

URBAN PLANNING ATTRIBUTES		
DENSITY	01	Population density
	02	Business density
CONNECTIVITY	03	Intersection density and street connectivity
	04	Cycling infrastructure
	05	Walkability / pedestrian infrastructure
	06	Public transport density
LAND USE MIX (DIVERSITY)	07	Health, wellness and community services
	08	Entertainment, culture and recreation services
	09	Physical and sport infrastructures
	10	Public open spaces
LANDSCAPE	11	Green and blue areas (greenness index, vegetation coverage)
	12	Aesthetic and cleanness
	13	Urban furniture
	14	Maintenance and lighting
TRAFFIC	15	Slow-moving and heavy traffic / Truck routes
	16	Traffic volume

Figure 3. Urban planning attributes (n = 16) significantly associated with health indicators.

HEALTH INDICATORS			
Physical Health	Physical	F01	Obesity and overweight
		F02	Diabetes
		F03	Cardiovascular diseases
		F04	Asthma and respiratory diseases
		F05	Functional capacity
		F06	Accidents and falls
		F07	Pain
	Behavioural	F08	Physical activity
		F09	Sedentary behavior
		F10	Food habits
Social Health	Psychological, emotional and social	S01	Support and social skills
		S02	Stress and anxiety
		S03	Depression
		S04	Cognitive function
		S05	Emotional wellbeing
		S06	Attention deficit
		S07	Mental health and psychological disorder
Environmental		A01	Noise pollution
		A02	Air pollution
Global		G01	Wellbeing and quality of life
		G02	Vitality and happiness

Figure 4. Health indicators (n = 21) significantly associated with urban planning attributes.

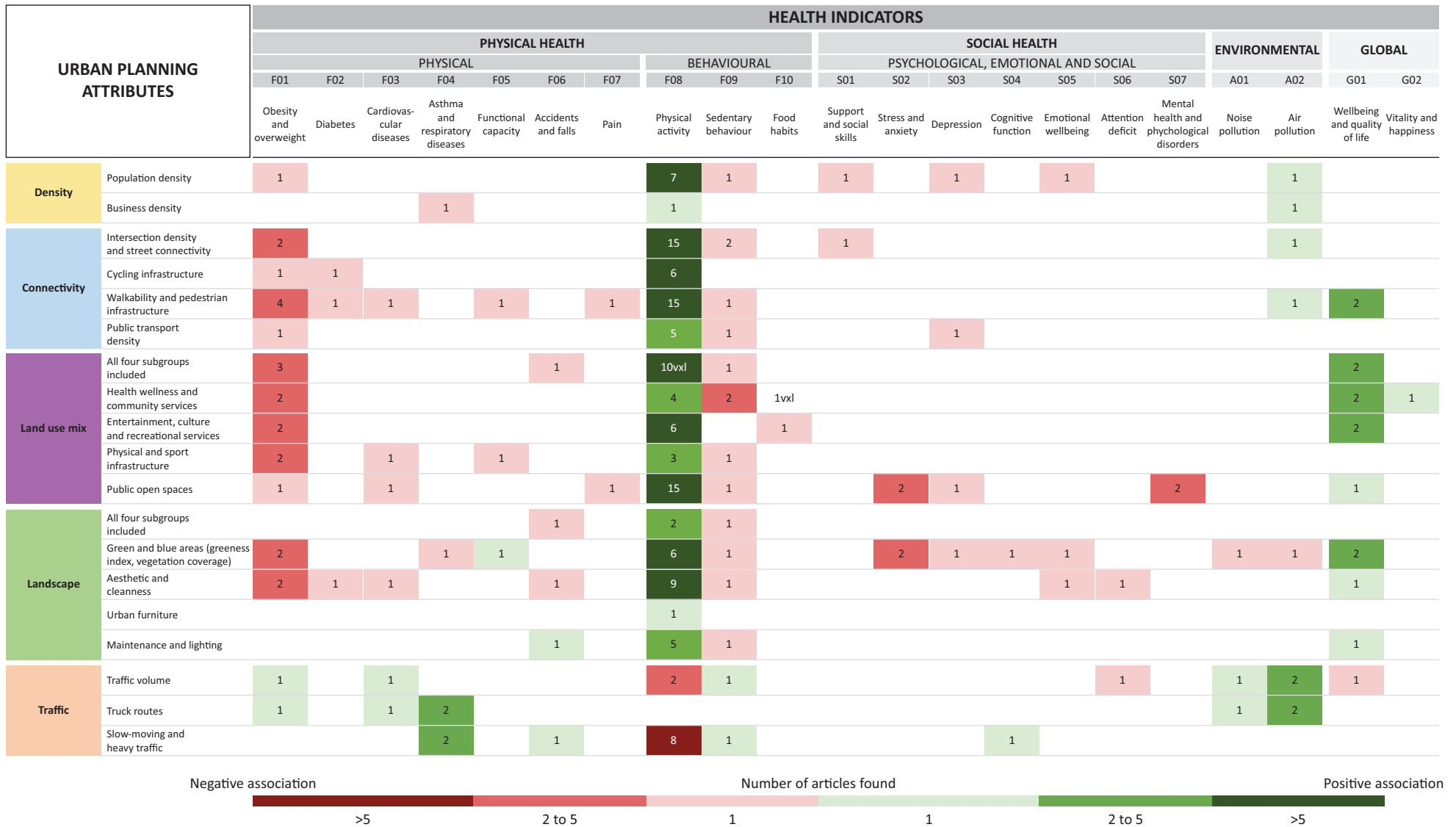


Figure 5. The urban and health association matrix for urban planners: Understanding associations between urban planning attributes and health outcomes.

Table 1. The healthy urban planning action checklist for urban planners.

Density

Proximate Commerce

- Ensure space for proximity commerce in all neighbourhoods
- Plan for bicycle parking spaces and bicycle paths
- Areas with fountains and shade around the trade area

Compact City

- Prioritise growth within the city itself, avoiding large extensions
 - Reuse obsolete interior spaces of the city as a priority for growth
 - Improve green infrastructure in areas of high density
 - Ensure connectivity between the different green areas
-

Connectivity

Urban Network Connectivity

- Maintain the continuity of sidewalks
- In the new areas of growth, limit the size of the blocks
- In built areas with low permeability, promote passages through buildings
- Avoid overpasses or underground passes for pedestrians
- In high-density pedestrian streets, avoid median-island accesses for vehicles
- Ensure access to the main public buildings
- Improve access to short distance parks and natural areas
- Create ecological corridors along the green and blue ecosystems
- Connect the bus stops with the train stations

Pedestrian Pathways Design

- Separating pedestrians from vehicles using furniture, trees, etc.
- Provide benches, fountains and rest areas as support for longer journeys
- Outdoor lighting along the streets and pedestrian routes
- Incorporate trees and other visually appealing elements along the routes
- Wide pavements suitable for use
- Pedestrian crossings at intersections
- Ensure a network of roads in continuity with the pavements and pedestrian routes, improving the connectivity of the walking routes
- Create pedestrian routes oriented towards elements or points of interest
- Streets and roads accessible to users with reduced mobility: width, radius of rotation, suitable crossing time, visible access ramps, etc.

Bicycle Network Connectivity

- Define a basic structure of bike lanes, with connections to the rest of the network
- Provide links between different modes of transport

Bicycle Network Design

- Use marks or signals to reinforce the separation between motorised areas and cyclist areas
- Enlarge bicycle network if its use exceeds the capacity
- Special attention to intersections to improve visibility between cyclists and cars
- Reduce conflicts between cyclists and the opening of vehicle doors. Expand parking width when needed
- Promote greenways with external connection

Cycling Infrastructure

- Foresee spaces for parking bicycles along and at the end of the routes

Land Use Mix

- Urban planning that fosters the mix of uses and activities (housing, offices, schools, trade, green areas, etc.) avoiding specialised areas in a single activity
 - Provide housing and work spaces in proximity to green spaces, parks, paths etc.
 - Promoting trade and services around housing and office areas
-

Table 1. (Cont.) The healthy urban planning action checklist for urban planners.

Landscape

Parks, Open Spaces, and Recreational Areas

- Prioritize about open spaces as an essential part of urban development
- Integrate the planning of green and blue ecosystems
- Ensure access to green areas within 250m of homes
- Ensure access to a large park within 10 minutes walking distance
- Create or improve urban forests
- Improve the access (security and visibility) of cyclists and pedestrians to large parks and green areas
- Assess the different possible uses for open spaces: sports, urban gardens, children’s playground, meeting point ...
- Create emblematic parks as key elements of the green infrastructure
- Improve the equipment of the parks to facilitate their use: paths, furniture, fountains, benches, children’s areas)
- Planning new open spaces in proximity to public buildings and infrastructure
- Designing parks considering the use and preferences of the local population and age groups
- Promote partnerships with organisations and/or businesses to sponsor to maintain parks and gardens
- Create a green belt around the city

Playgrounds

- Include areas for sports and multi-use areas
- Preserve the natural land as far as possible
- Lighting to promote use during winter
- Provide suitable spaces for different seasons and weather conditions

Public Space

- Place green areas along the main pedestrian paths
- Place squares near traffic stops
- Ensure the access of cyclists to the green areas
- Ensure squares and green areas have different uses
- Foresee the possible uses in a variety of climatic conditions

Leisure and Sports

- Improve the infrastructure to promote sport and physical activity
- Provide the infrastructure to practice physical activity and sports activity in all city contexts such as public parks, trails, and recreational facilities among others.

Aesthetics

- Avoid abandoned or underused spaces in the city

Green Cover and Vegetation

- Use species adapted to the climatic zone
 - Promote green roofs and facades on buildings
 - Increase the number of trees in vulnerable areas
-

Traffic

Public Transport and Parking

- Provide car parking areas to facilitate the exchange of transport mode, promoting active mobility
- Provide car parking at the entrances of the city in connection with pedestrian routes

Traffic Calming

- Reduce the width of the roads to promote lower speed
 - Incorporate speed reducers
-

3.3. Results From the Comprehensive Approach for Incorporating Health-Focused Urban Planning Actions Into the Urban Master Plan of Vic

As a result of the developed evidence-based support tools and in cooperation with urban planners and public health professionals, a comprehensive approach

was designed to include health-focused urban planning actions in the urban master plan of Vic. The comprehensive approach delineated five specific steps (see Figure 6):

- Step 1: Urban planners identified the urban planning attributes related to health (see Figure 3).

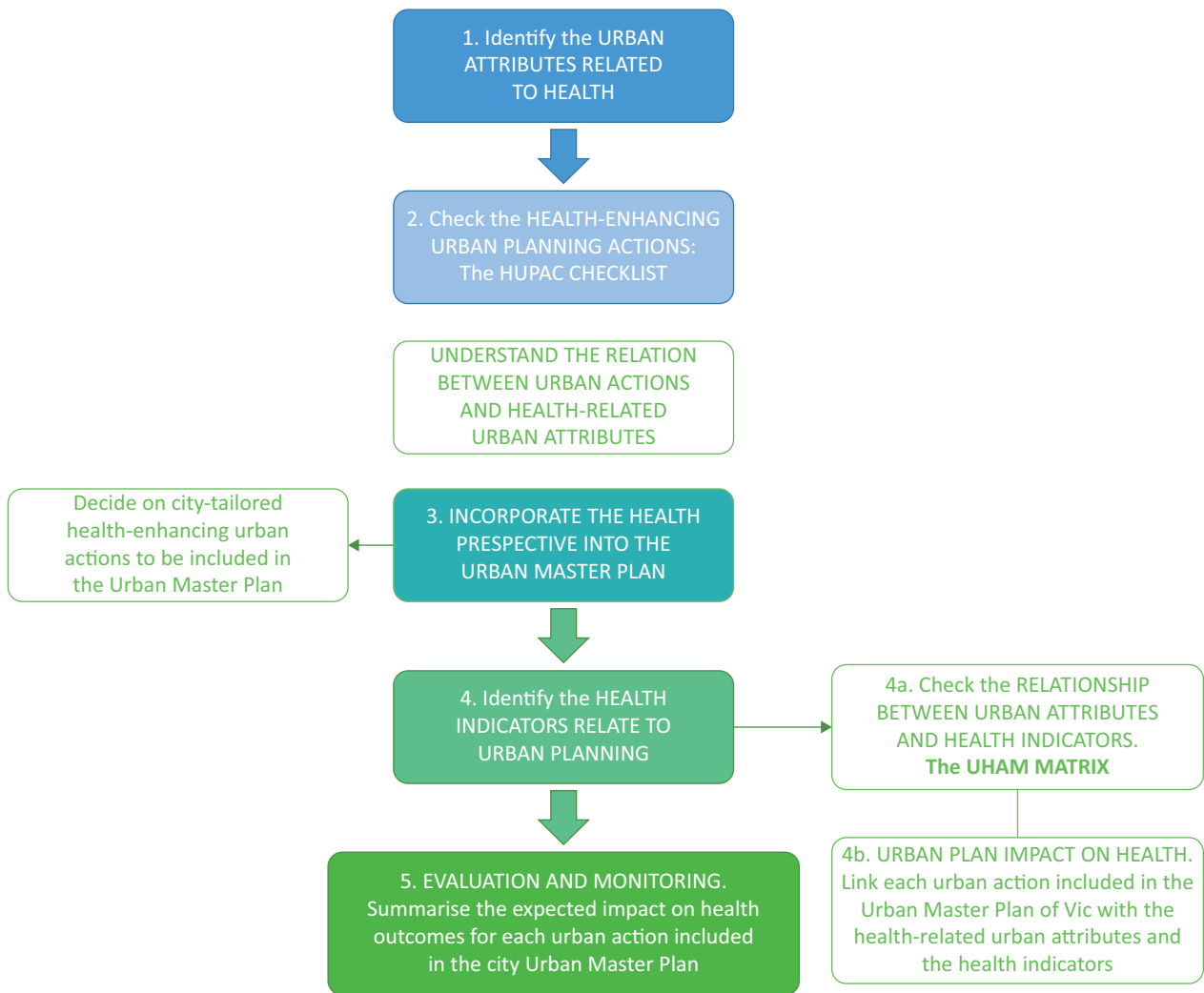


Figure 6. Comprehensive approach to connect the urban planning actions of the Vic urban master plan with the health-related urban attributes and citizens’ health.

- Step 2: Urban planners checked the HUPAC as a guide to identify examples of practices for health-focused urban actions.
- Step 3: Urban planners chose and decided on city-tailored health-focused urban planning actions to be included in the Vic urban master plan.
- Step 4: Urban planners checked the UHAM to connect each urban planning action included in the Vic urban master plan with the urban planning attributes and health-related indicators identified by the reviewed evidence (Figure 7).
- Step 5: Urban planners summarised the expected impact on health for each urban planning action included in the Vic urban master plan according to the UHAM.

As a result, 112 local health-focused urban planning actions were successfully incorporated into the local urban master plan of Vic (see Supplementary File 7). Each urban planning action was related to one or several of the 16 health-related urban planning attributes.

In turn, these were associated with one or several health outcomes (see Figure 6, step 4b; see also Figure 7). For example, “completing the green ring of Vic” (street connectivity and walkability) was designed to positively impact citizens’ physical activity and emotional well-being. This comprehensive approach allowed urban planners to have a global overview (see Figure 6, step 5) of the expected impact the urban master plan of Vic might have on health-related urban planning attributes (see Figure 8), and the expected impact of the overall local urban planning actions included in the Vic urban master plan on health (see Figure 9).

4. Discussion

This study developed evidence-based tools and a comprehensive approach to help urban planners integrate health-focused urban planning actions into the urban master plan of a medium-sized city named Vic, Barcelona (Spain). This provided a unique opportunity to perform translational research to improve urban built

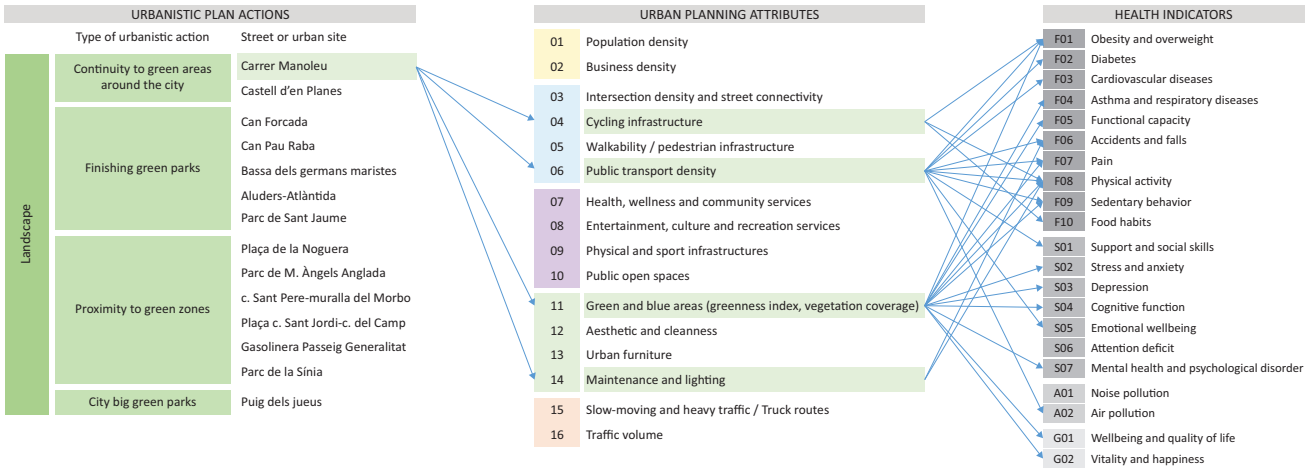


Figure 7. Example of how urban planning actions included in the Vic Urban Master Plan were linked to the health-related urban planning attributes and health indicators.

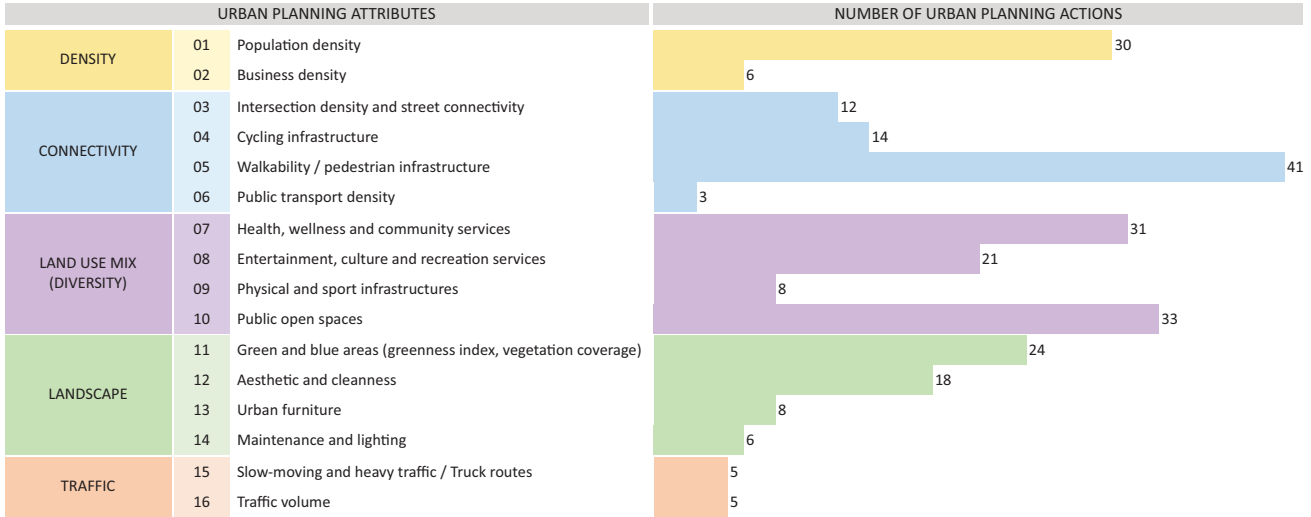


Figure 8. Overview of the number of urban planning actions included in the Vic urban master plan that relate to the health-related urban planning attributes.

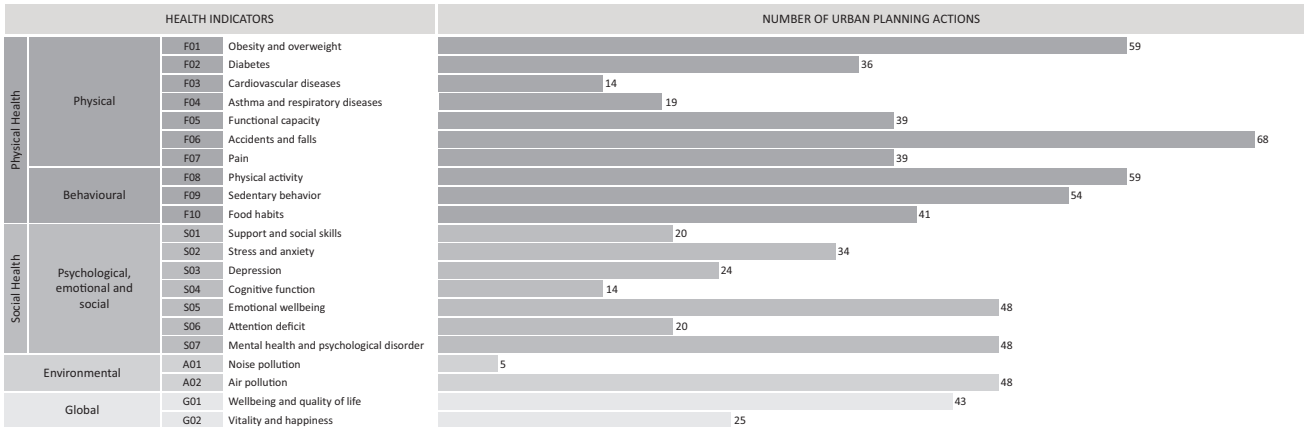


Figure 9. Overview of the number of the urban planning actions included in the Vic urban master plan that relate to the health indicators.

environments at the earliest stages of planning development in order to foster citizens' health and well-being (McKinnon et al., 2020). This study also contributes to scaling up the inclusion of health in the local urban planning of small to medium-sized cities on which the European pattern of settlements mostly depends (Servillo et al., 2017). This is a relevant public health topic that was emphasised during the pandemic when urban planning was identified as a key strategy to improve citizens' health (Frank et al., 2019).

The development process was guided by a systematic review of scientific evidence and gray literature, as well as the use of participatory approaches with stakeholders, two key factors for effective scaling up (Milat et al., 2015). The UHAM, the HUPAC, and the comprehensive approach were successfully implemented in urban planners' daily work and could be useful to help other urban planners integrate health into local urban planning. This would facilitate the much-needed multidisciplinary work across urban planning and health disciplines (McKinnon et al., 2020). The implementation of a UHAM and a HUPAC represented a low-cost translational comprehensive approach that seemed to overcome the main barriers to applying baseline research into something as practical and specific as an Urban Master Plan. The main barriers identified by stakeholders in the steering group included (a) the complexity of working multidisciplinary with professionals that address the same issue from different perspectives and (b) applying evidence-based information in a comprehensive way so it guides professional action and decision-making. This work contributes to implementation research that is needed to enhance population health by identifying and synthesizing evidence that shifts toward greater stakeholder input (Lobb & Colditz, 2013). This shift improves the relevance of the information that is produced and guides decision-makers in their implementation of research-based interventions (Lobb & Colditz, 2013).

City planning is an essential element to fight the major global health challenges of the 21st century (Sallis et al., 2016). Therefore, facilitating the implementation of a health-oriented urban master plan is fundamental to address the existing gap between what is known in public health research and what gets implemented in urban planning practice (Milat et al., 2015). To our knowledge, research on urban health has focused on developing national urban indicators to describe what constitutes a healthy and liveable city (Alderton et al., 2019; Giles-Corti et al., 2014), exploring the capacity of urban policies to create healthy and liveable cities (Giles-Corti et al., 2020), providing quality criteria and validated instruments for evaluating municipal environmental planning in metropolitan areas (Poza-Vilches et al., 2020), understanding the influence of key actors, planning approaches and health-data characteristics to inform urban health planning (Mirzoev et al., 2019), and carrying out health impact assessments to estimate the health gains of city planning interventions like

active transportation (Rojas-Rueda et al., 2012). Studies on urban health are predominantly cross-sectional and reviews (Mueller et al., 2015); therefore this study provides a systematic and practical approach to the design of health-enhancing cities (Sallis et al., 2016) with a special focus on medium-sized cities. This is especially relevant since most urban research focuses on large metropolitan areas.

Previous studies have identified similar results on the relationships between urban planning attributes and physical, behavioural, psychological, emotional, social, environmental and global health (Hankey & Marshall, 2017; Mueller et al., 2021; Sallis et al., 2016). Several systematic reviews have studied the relationships between built environments and physical activity (Smith et al., 2017), cardio-metabolic health (Chandrabose et al., 2019), mental health and wellbeing (Moore et al., 2018). However, there is a lack of comprehensive approaches—specifically tailored to urban planners—for adopting practices that enhance community health through better environmental decision-making. The development of several health-enhancing urban built environment interventions in Vic, Barcelona, could contribute to attenuating future environmental, social, and behavioural health hazards of this city.

This study has a number of limitations. First, the comprehensive approach and tools for introducing health outcomes into urban master plans were developed for a specific European, Mediterranean, medium-sized city. To be scaled up to other medium-sized cities, caution is needed and contextual differences might have to be considered. Second, it is very likely that the checklist did not include all the urban planning actions published in Google within the health-related urban planning attributes. The vast amount of existing information was a limiting factor, but many urban planning actions were listed ($n = 117$) and data saturation was reached. In the future, the checklist of health-focused urban planning actions should be expanded to include new urban planning actions that will be developed over time. Similarly, the UHAM should be further expanded to include any newfound relationships between urban attributes and health outcomes. Future work should also build the comprehensive approach and tools into technological platforms (i.e., web tools) to make urban planners' practice easier.

This study has a number of unique features. First, it involved applied research at the early stages of the development of urban places. Second, it involved a scoping review which is more explanatory and describes a broader field of inquiry than systematic reviews (Arksey & O'Malley, 2005). The scoping review illustrated the range and nature of real-life activity in the research practice area of urban planning and health. Third, the comprehensive approach and tools were developed by bringing together different disciplines, including public health professionals, urban planners, and researchers.

5. Conclusion

In the 21st century, addressing the social and built environment factors that influence the health of individuals and communities is a key issue for preventing disease, promoting health and well-being (Cockerham et al., 2017), and achieving the United Nations SDGs 3 and 11 for 2030. Developing evidence-based tools that help urban planners to design and build health-focused urban actions for urban master plans is a key element for the promotion of urban health. This study contributes to translational research by developing a comprehensive approach that might scale up the inclusion of health-focused urban actions in the design of other urban master plans of other small to medium-sized European cities. It represents a contribution to implementation research that is needed to enhance population health (Lobb & Colditz, 2013). This could maximize the effectiveness of creating health-enhancing urban environments from zero, allowing for a more effective evaluation and follow-up of their health impact.

Acknowledgments

The Barcelona Provincial Council coordinated the project. We acknowledge the contributions of urban planners in the Vic City Council.

Conflict of Interests

The authors declare no conflict of interests.

Supplementary Material

Supplementary material for this article is available online in the format provided by the authors (unedited).

References

- Alderton, A., Davern, M., & Nitvimol, K. (2019). What is the meaning of urban liveability for a city in a low-to-middle-income country? Contextualizing liveability for Bangkok, Thailand. *Global Health, 15*(1). <https://doi.org/10.1186/s12992-019-0484-8>
- Arksey, H., & O'Malley, L. (2005). Scoping studies: Towards a methodological framework. *International Journal of Social Research Methodology, 8*(1), 19–32. <https://doi.org/10.1080/1364557032000119616>
- Azzopardi-Muscat, N., Brambilla, A., Caracci, F., & Capolongo, S. (2020). Synergies in design and health. The role of architects and urban health planners in tackling key contemporary public health challenges. *Acta Biomedica, 91*(3-S), 9–20. <https://doi.org/10.23750/abm.v91i3-S.9414>
- Barouki, R., Kogevinas, M., Audouze, K., Belesova, K., Bergman, A., Birnbaum, L., Boekhold, S., Denys, S., Desseille, C., Drakvik, E., Frumkin, H., Garric, J., Destoumieux-Garzon, D., Haines, A., Huss, A., Jensen, G., Karakitsios, S., Klanova, J., Koskela, I.M., . . . Vineis, P. (2021). The Covid-19 pandemic and global environmental change: Emerging research needs. *Environmental International, 146*. <https://doi.org/10.1016/j.envint.2020.106272>
- Berg, B. (2004). *Qualitative research methods for the social sciences* (5th ed.). Pearson.
- Chandrase, M., Rachele, J. N., & Gunn, L. (2019). Built environment and cardio-metabolic health: Systematic review and meta-analysis of longitudinal studies. *Obesity Reviews, 20*(1), 41–54. <https://doi.org/10.1111/obr.12759>
- Cockerham, W. C., Hamby, B. W., & Oates, G. R. (2017). The social determinants of chronic disease. *American Journal of Preventive Medicine, 52*(1S1), S5–S12. <https://doi.org/10.1016/j.amepre.2016.09.010>
- Frank, L. D., Iroz-Elardo, N., MacLeod, K. E., & Hong, A. (2019). Pathways from built environment to health: A conceptual framework linking behavior and exposure-based impacts. *Journal of Transport and Health, 12*, 319–355. <https://doi.org/10.1016/j.jth.2018.11.008>
- Frank, L. D., & Wali, B. (2021). Treating two pandemics for the price of one: Chronic and infectious disease impacts of the built and natural environment. *Sustainable Cities and Society, 73*. <https://doi.org/10.1016/j.scs.2021.103089>
- Giles-Corti, B., Badland, H., & Mavoa, S. (2014). Reconnecting urban planning with health: A protocol for the development and validation of national liveability indicators associated with noncommunicable disease risk behaviours and health outcomes. *Public Health Research Practice, 25*(1). <https://doi.org/10.17061/phrp2511405>
- Giles-Corti, B., Lowe, M., & Arundel, J. (2020). Achieving the SDGs: Evaluating indicators to be used to benchmark and monitor progress towards creating healthy and sustainable cities. *Health Policy, 124*(6), 581–590. <https://doi.org/10.1016/j.healthpol.2019.03.001>
- Giles-Corti, B., Vernez Moudon, A., Reis, R., Turrell, G., Dannenberg, A., Badland, H., Foster, S., Lowe, M., Sallis, J. F., Stevenson, M., & Owen, N. (2016). City planning and population health: A global challenge. *The Lancet, 388*(10062), 2912–2924. [https://doi.org/10.1016/S0140-6736\(16\)30066-6](https://doi.org/10.1016/S0140-6736(16)30066-6)
- Glazener, A., & Khreis, H. (2019). Transforming our cities: Best practices towards clean air and active transportation. *Current Environmental Health Reports, 6*(1), 22–37. <https://doi.org/10.1007/s40572-019-0228-1>
- Goenka, S., & Andersen, L. B. (2016). Urban design and transport to promote healthy lives. *The Lancet, 388*(10062), 2851–2853. [https://doi.org/10.1016/S0140-6736\(16\)31580-X](https://doi.org/10.1016/S0140-6736(16)31580-X)
- Hankey, S., & Marshall, J. D. (2017). Urban form, air pollution, and health. *Current Environmental Health Reports, 4*(4), 491–503. <https://doi.org/10.1007/s40572-017-0167-7>

- Higgs, C., Badland, H., Simons, K., Knibbs, L. D., & Giles-Corti, B. (2019). The Urban Liveability Index: Developing a policy-relevant urban liveability composite measure and evaluating associations with transport mode choice. *International Journal of Health Geography, 18*(1). <https://doi.org/10.1186/s12942-019-0178-8>
- Juncà, A., Bort-Roig, J., Martori, J. C., & Puig-Ribera, A. (2019). Improving walkability in Catalonia through a participatory and empowerment model. *International Journal of Sustainable Society, 11*(2), 108–124. <https://doi.org/10.1504/IJSSOC.2019.103654>
- Khomenko, S., Nieuwenhuijsen, M., Ambròs, A., Wegener, S., & Mueller, N. (2020). Is a liveable city a healthy city? Health impacts of urban and transport planning in Vienna, Austria. *Environmental Research, 183*. <https://doi.org/10.1016/j.envres.2020.109238>
- Kleinert, S., & Horton, R. (2016). Urban design: An important future force for health and well-being. *The Lancet, 388*(10062), 2848–2850. [https://doi.org/10.1016/S0140-6736\(16\)31578-1](https://doi.org/10.1016/S0140-6736(16)31578-1)
- Koehler, K., Latshaw, M., Matte, T., Kass, D., Frumkin, H., Fox, M., Hobbs, B. F., Wills-Karp, M., & Burke, T. A. (2018). Building healthy community environments: A public health approach. *Public Health Reports, 133*(Suppl. 1), 355–435. <https://doi.org/10.1177/0033354918798809>
- Lobb, R., & Colditz, G. A. (2013). Implementation science and its application to population health. *Annual Review of Public Health, 34*, 235–251. <https://doi.org/10.1146/annurev-publhealth-031912-114444>
- McKinnon, G., Pineo, H., Chang, M., Taylor-Green, L., Strategy, A. J., & Toms, R. (2020). Strengthening the links between planning and health in England. *British Medical Journal, 16*(369). <https://doi.org/10.1136/bmj.m795>
- Milat, A. J., Bauman, A., & Redman, S. (2015). Narrative review of models and success factors for scaling up public health interventions. *Implementation Science, 10*. <https://doi.org/10.1186/s13012-015-0301-6>
- Mirzoev, T., Poudel, A. N., & Gissing, S. (2019). Is evidence-informed urban health planning a myth or reality? Lessons from a qualitative assessment in three Asian cities. *Health Policy and Planning, 34*(10), 773–783. <https://doi.org/10.1093/heapol/czz097>
- Moher, D., Liberati, A., Tetzlaff, J., & Altman, D. G. (2009). Preferred reporting items for systematic reviews and meta-analyses: The PRISMA statement. *PLoS Medicine, 6*(7). <https://doi.org/10.1136/bmj.b2535>
- Moore, T. H. M., Kesten, J. M., & López-López, J. A. (2018). The effects of changes to the built environment on the mental health and well-being of adults: Systematic review. *Health and Place, 53*, 237–257. <https://doi.org/10.1016/j.healthplace.2018.07.012>
- Mueller, N., Daher, C., Rojas-Rueda, D., Delgado, L., Vicioso, H., Gascon, M., Marquet, O., Vert, C., Martin, I., & Nieuwenhuijsen, M. (2021). Integrating health indicators into urban and transport planning: A narrative literature review and participatory process. *International Journal of Hygiene and Environmental Health, 235*. <https://doi.org/10.1016/j.ijheh.2021.113772>
- Mueller, N., Rojas-Rueda, D., & Cole-Hunter, T. (2015). Health impact assessment of active transportation: A systematic review. *Preventive Medicine, 76*, 103–114. <https://doi.org/10.1016/j.ypmed.2015.04.010>
- Nieuwenhuijsen, M. J. (2018). Influence of urban and transport planning and the city environment on cardiovascular disease. *Nature Reviews Cardiology, 15*(7), 432–438. <https://doi.org/10.1038/s41569-018-0003-2>
- Nieuwenhuijsen, M. J. (2020). Urban and transport planning pathways to carbon neutral, liveable and healthy cities: A review of the current evidence. *Environment International, 140*. <https://doi.org/10.1016/j.envint.2020.105661>
- Nieuwenhuijsen, M. J., Khreis, H., Verlinghieri, E., Mueller, N., & Rojas-Rueda, D. (2017). Participatory quantitative health impact assessment of urban and transport planning in cities: A review and research needs. *Environment International, 103*, 61–72. <https://doi.org/10.1016/j.envint.2017.03.022>
- Paez, A. (2017). Grey literature: An important resource in systematic reviews. *Journal of Evidence-Based Medicine. https://doi.org/10.1111/jebm.12265*
- Pineo, H., Glonti, K., & Rutter, H. (2020). Use of urban health indicator tools by built environment policy and decision-makers: A systematic review and narrative synthesis. *Journal of Urban Health, 97*, 418–435. <https://doi.org/10.1007/s11524-019-00378-w>
- Poza-Vilches, M. F., Gutiérrez-Pérez, J., & Pozo-Llorente, M. T. (2020). Quality criteria to evaluate performance and scope of 2030 agenda in metropolitan areas: Case study on strategic planning of environmental municipality management. *International Journal of Environmental Research in Public Health, 17*(2). <https://doi.org/10.3390/ijerph17020419>
- Ramirez-Rubio, O., Daher, C., & Fanjul, G. (2019). Urban health: An example of a “health in all policies” approach in the context of SDGs implementation. *Global Health, 15*(1). <https://doi.org/10.1186/s12992-019-0529-z>
- Rojas-Rueda, D., de Nazelle, A., Teixidó, O., & Nieuwenhuijsen, M. J. (2012). Replacing car trips by increasing bike and public transport in the greater Barcelona metropolitan area: A health impact assessment study. *Environment International, 49*, 100–109. <https://doi.org/10.1016/j.envint.2012.08.009>
- Rubio, D. M., Schoenbaum, E. E., Lee, L. S., Schteingart, D. E., Marantz, P. R., Anderson, K. E., Platt, L. D., Baez, A., & Esposito, K. (2010). Defining translational research: Implications for training. *Journal of the Association of American Medical Colleges, 85*(3), 470–475. <https://doi.org/10.1097/ACM.0b013e3181ccd618>

- Salgado, M., Madureira, J., Mendes, A. S., Torres, A., Teixeira, J. P., & Oliveira, M. D. (2020). Environmental determinants of population health in urban settings. A systematic review. *BMC Public Health*, 20(1). <https://doi.org/10.1186/s12889-020-08905-0>
- Sallis, J. F., Bull, F., & Burdett, R. (2016). Use of science to guide city planning policy and practice: How to achieve healthy and sustainable future cities. *The Lancet*, 388(10062), 2936–2947. [https://doi.org/10.1016/S0140-6736\(16\)30068-X](https://doi.org/10.1016/S0140-6736(16)30068-X)
- Schoner, J., Chapman, J., Brookes A., MacLeod, K., Fox E., Iroz-Elardo, N., & Frank, L. D. (2018). Bringing health into transportation and land use scenario planning: Creating a national public health assessment model (N-PHAM). *Journal of Transportation and Health*, 10, 401–418. <https://doi.org/10.1016/j.jth.2018.04.008>
- Servillo, L., Atkinson, R., & Hamdouch, A. (2017). Small and medium-sized towns in Europe: Conceptual, methodological and policy issues—Project TOWN. *Journal of Economic and Human Geography*, 108(4), 365–379. <https://doi.org/10.1111/tesg.12252>
- Smith, M., Hosking, J., & Woodward, A. (2017). Systematic literature review of built environment effects on physical activity and active transport—An update and new findings on health equity. *International Journal of Behavioural Nutrition and Physical Activity*, 14(1). <https://doi.org/10.1186/s12966-017-0613-9>
- Smith, N., Georgiou, M., King, A. C., Tiegies, Z., Webb, S., & Chastin, S. (2021). Urban blue spaces and human health: A systematic review and meta-analysis of quantitative studies. *Cities*, 119. <https://doi.org/10.1016/j.cities.2021.103413>
- United Nations. (2015). *Resolution adopted by the General Assembly: Transforming our world; the 2030 agenda for sustainable development*.
- United Nations. (2016). *Resolution adopted by the General Assembly on 23rd December 2016: New urban agenda*.
- van Oijstaeijen, W., van Passel, S., Cools, J. (2020). Urban green infrastructure: A review on valuation toolkits from an urban planning perspective. *Journal of Environmental Management*, 267. <https://doi.org/10.1016/j.jenvman.2020.110603>
- Vardoulakis, S., Dear, K., & Wilkinson, P. (2016). Challenges and opportunities for urban environmental health and sustainability: The HEALTHY-POLIS initiative. *Environmental Health*, 15(Suppl. 1). <https://doi.org/10.1186/s12940-016-0096-1>
- Wolf, K. L., Lam, S. T., McKeen, J. K., Richardson, G. R. A., van den Bosch, M., & Bardekjian, A. C. (2020). Urban trees and human health: A scoping review. *International Journal of Environmental Research and Public Health*, 17(12). <https://doi.org/10.3390/ijerph17124371>
- WHO Regional Office for Europe. (2009). *Phase V (2009–2013) of the WHO European Healthy Cities Network: Goals and requirements*.

About the Authors



Anna Puig-Ribera has a PhD and holds an MSc degree in exercise and health sciences (University of Bristol, UK), as well as a degree in physical activity and sports sciences (University of Lleida). Lecturer and researcher at the University of Vic, she is also coordinator of the research group Sport and Physical Activity and of the PhD programme for sports and human movement sciences at this institution. She has published 60 scientific papers, has a citation count of 1,146, and an h-index of 18 (Scopus 19/08/22).



Marta Rofin is an architect in urban planning, with a long professional experience in spatial planning (2020 Catalonia Prize Urbanism Award) and the incorporation of health in urban development. She is co-author of the *Guide for Incorporating Health Into Master Planning*, coordinator of the URBACT Healthy Cities Network, and co-director of the postgraduate programme for urban planning and health at the Polytechnic University of Catalonia. She is a lecturer in the master’s programme for community health promotion at the University of the Basque Country.



Judit Bort-Roig holds a doctoral degree from the University of Vic. Her research focuses on physical activity and health for the general population concerning multi-disciplinary issues. She has a specific interest in workplace environment, physical activity measurement, as well as in community interventions that impact behaviour change and health indicators. She has published 17 scientific papers, has a citation count of more than 500, and an h-index of 8 (Scopus 12/05/21).



Eva Aumatell is a psychologist at the Open University of Catalonia and a member of the Behaviour Design Lab at the e-Health Centre. She holds an MSc degree in information and knowledge society and collaborates in research projects on digital health, digital literacy, physical activity, and healthy cities. She is also a research officer at the COCEMFE-UOC Chair in personal autonomy and e-Health.



Albert Juncà is vice-chancellor for teaching staff at the University of Vic since 2019. From 2014–2017 and 2020–2021 he was the coordinator of the masters' programme in sport management at the University of Vic. He holds a PhD in sociology of sport (University of Barcelona, 2010), a degree in physical activity and sport sciences (University of Barcelona), psychology studies (Open University of Catalonia), and business administration and management (University of Barcelona).



Marc de San Pedro is a PhD in comprehensive care and health services (University of Vic-Central University of Catalonia), a postgraduate in ICT and health systems, and earned an MSc degree in information and knowledge society from the Open University of Catalonia. He is a social graduate from the University of Barcelona. His master's and postgraduate degrees were on strategic management of information and knowledge and innovation in organizations. He holds an MBA in cooperative management on a scholarship from the Espriu Foundation for Health Cooperation.



Francesc Garcia-Cuyàs is a doctor in digestive system surgery. With an extraordinary award for a doctoral thesis, he is currently deputy chief medical officer and director of digital transformation at the Sant Joan de Déu Hospital in Barcelona. Garcia-Cuyàs is an associate professor at the Faculty of Medicine of the University of Vic and the Autonomous University of Barcelona, a member of the Digital Care research group, and president of the Catalan Society of Digital Health. He earned a master's degree from ESADE in management of integrated services of health.



Cati Chamorro is a biologist and her professional experience has focused on the field of public health for local authorities. Head of the public health service at the Barcelona Provincial Council (2007–2022), she was previously the coordinator of the Catalan Network of Healthy Cities (1998–2000). She is a member of the steering group for the project Urban Environment and Health of the Barcelona Provincial Council, which was awarded the EPSA 2015 prize for the best transversal project. Chamorro was president of the Public Health Society of Catalonia and the Balearic Islands (2015–2017).



Lorena Perona-Ribes is an urban planner and a member of the Technical Services for Town Planning in the Barcelona Provincial Council. An architect from Barcelona School of Architecture (ETSAB) with a master's in urban design from the Polytechnic University of Catalonia, Perona-Ribes is responsible for the urban planning sector at the Barcelona Provincial Council on the project Strategies and Instruments for Urbanizations with Urban Deficits.



Josep Ramon Torrentó holds a degree in biology from the University of Barcelona and is an agricultural engineer (degree earned from the Politecnic University of Catalonia). A PhD in biology and a postdoctoral fellow at CSIC (Spain) and the Ministry of Agriculture in Israel, he has worked in the private sector and joined the Barcelona Provincial Council in 1990, where he worked in the management of natural disasters, natural parks management, and in the public health sector, where he currently runs the project Urban Environment and Health.



Guillem Jabardo-Camprubí is a PhD candidate at the University of Vic and researcher in the Sports and Physical Activity Research Group (GREAF). Jabardo-Camprubí is an associate professor in the Department of Basic and Methodological Sciences at the same university and a full-time professor at UManresa. His research focused on the social determinants of health, mainly physical activity, and how these influence the adoption and adherence to healthy lifestyles in both the general population and people with chronic conditions.



Fabiana Palmero is an architect and the deputy mayor and councillor for urban planning, mobility, and international projects of the City Council of Vic. Palmero holds postgraduate degrees in environmental architecture, urban environment and sustainability, sustainable cities, and territory. She is a professor at the Polytechnic University of Catalonia, political director of the Vic urban master plan and of the sustainable mobility plan of Vic, and political director of the URBACT Healthy Cities Network led by the Vic City Council. Palmero is a member of the Urban Planning Territorial Commission of the Government of Catalonia.



Marina Geli is the general director of the Faculty of Medicine and coordinator of the Centre for Health and Social Studies at the University of Vic. Geli is also a doctor and specialist in internal medicine and infectious diseases (University of Barcelona) and acted as minister of health of the Government of Catalonia from 2003 to 2010. Member of the Parliament of Catalonia from 2003 to 2015, Geli worked previously as an internist doctor at the Josep Trueta Hospital in Girona (1982–1990). From 1990 to 1995, Geli worked as a doctor in several centres for people with disabilities in Catalonia.